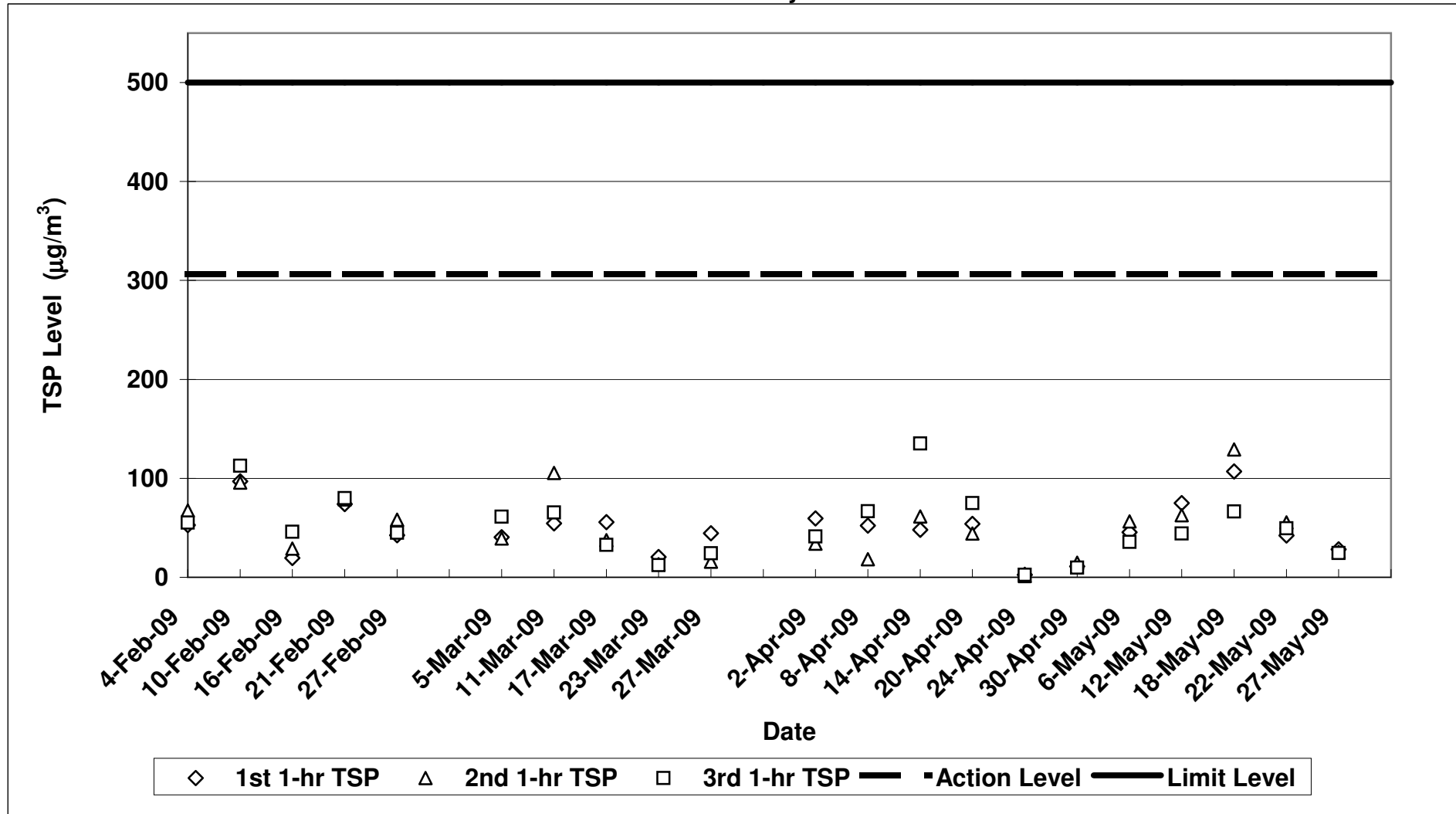


Contract No. DC/2007/12 - Design and Construction of Tsuen Wan Drainage Tunnel

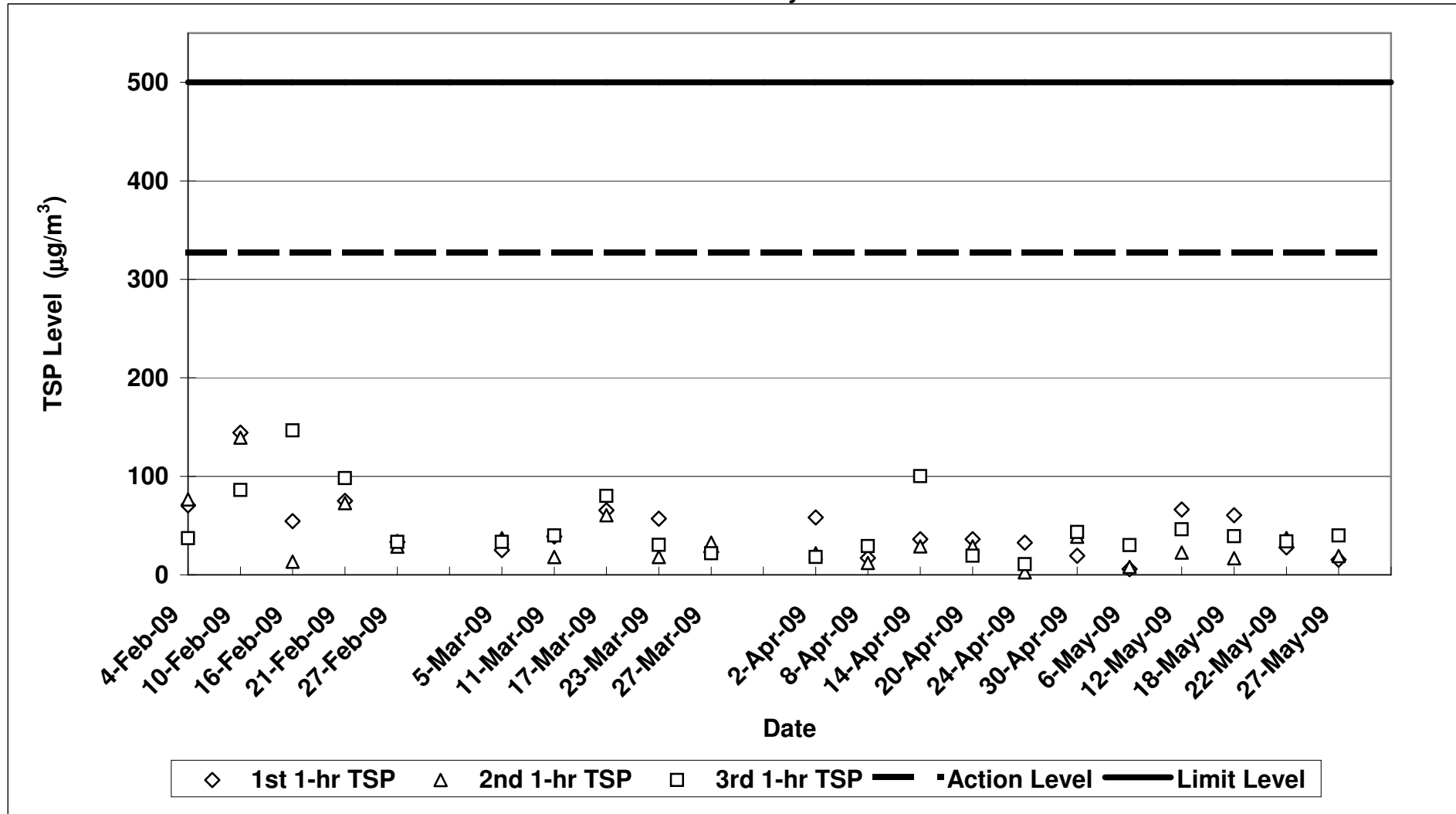
Air Quality Impact Monitoring Results (1-Hour TSP)

Location	Monitoring Date	Weather Conditions	Wind Speed with Direction (m/s)	Temp (°C)	Timer-I	Timer-F	Time (mins)	Flow-I (CFM)	Flow-F (CFM)	Flow-I (m³/min)	Flow-F (m³/min)	Flow-avg (m³/min)	Volume (m³)	Weight-I (g)	Weight-F (g)	Weight-diff. (g)	1-hr TSP (µg/m³)	Average 1-Hr TSP (µg/m³)	Action/Limit Levels (µg/m³)	Observation / Site Condition	Remark
Sik Sik Yuen Ho Fung College - Intake (ASR1)	06-May-09	Fine	0.6E	23	573740	573840	60.0	40	40	1.36	1.36	1.36	81.41	2.8465	2.8502	0.0037	45.4	45.9	306.6/500	Excavation by backhoe	Human activity, traffic noise
		Fine	0.6E	23	573940	573940	60.0	40	40	1.36	1.36	1.36	81.41	2.7954	2.8000	0.0046	56.5				
		Fine	0.6E	23	573940	574040	60.0	40	40	1.36	1.36	1.36	81.41	2.8508	2.8537	0.0029	35.6				
	12-May-09	Sunny	0.5NE	31	574040	574140	60.0	40	40	1.36	1.36	1.36	81.41	2.8912	2.8973	0.0061	74.9	60.6	306.6/500	Excavation by backhoe	Human activity, traffic noise
		Sunny	0.5NE	31	574140	574240	60.0	40	40	1.36	1.36	1.36	81.41	2.8168	2.8219	0.0051	62.6				
		Sunny	0.5NE	31	574240	574340	60.0	40	40	1.36	1.36	1.36	81.41	2.8780	2.8796	0.0036	44.2				
	18-May-09	Sunny	0.6E	31	574340	574440	60.0	40	40	1.36	1.36	1.36	81.41	2.8512	2.8599	0.0087	106.9	100.8	306.6/500	Excavation and breaking by backhoe	Human activity, traffic noise, other site works
		Sunny	0.6E	31	574440	574540	60.0	41	41	1.38	1.38	1.38	82.80	2.8523	2.8630	0.0107	129.2				
		Sunny	0.6E	31	574540	574640	60.0	41	41	1.38	1.38	1.38	82.80	2.8725	2.8780	0.0055	66.4				
	22-May-09	Cloudy	0.5E	25	574640	574740	60.0	41	41	1.38	1.38	1.38	82.80	2.7972	2.8007	0.0035	42.3	49.1	306.6/500	Excavation and breaking by backhoe	Human activity, traffic noise, other site works
		Cloudy	0.5E	25	574740	574840	60.0	41	41	1.38	1.38	1.38	82.80	2.8327	2.8373	0.0046	55.6				
		Cloudy	0.5E	25	574840	574940	60.0	41	41	1.38	1.38	1.38	82.80	2.8408	2.8449	0.0041	49.5				
27-May-09	Cloudy	0.5E	24	574942	575042	60.0	40	40	1.36	1.36	1.36	81.41	2.8557	2.8510	0.0023	23.3	26.2	306.6/500	Excavation and breaking by backhoe	Human activity, traffic noise, other site works	
	Cloudy	0.5E	24	575042	575142	60.0	40	40	1.36	1.36	1.36	81.41	2.8163	2.8184	0.0021	25.3					
	Cloudy	0.5E	24	575142	575242	60.0	40	40	1.36	1.36	1.36	81.41	2.8340	2.8360	0.0020	24.6					
Hong Hoi Chee Hong Temple - Intake (ASR3)	06-May-09	Fine	0.5NE	28	542189	542290	60.6	41	41	1.41	1.41	1.41	85.26	2.8073	2.8078	0.0005	5.9	14.7	327.4/500	NIL	Human activity, traffic noise
		Fine	0.5NE	28	542290	542392	61.2	41	41	1.41	1.41	1.41	86.10	2.8192	2.8199	0.0007	8.1				
		Fine	0.5NE	28	542392	542490	58.8	41	41	1.41	1.41	1.41	82.73	2.8738	2.8763	0.0025	30.2				
	12-May-09	Sunny	0.3NE	29	542490	542592	60.0	41	41	1.41	1.41	1.41	84.41	2.8508	2.8564	0.0056	66.3	45.0	327.4/500	NIL	Human activity, traffic noise
		Sunny	0.3NE	29	542590	542695	60.0	41	41	1.41	1.41	1.41	84.41	2.8028	2.8047	0.0019	22.5				
		Sunny	0.3NE	29	542690	542790	60.0	41	41	1.41	1.41	1.41	84.41	2.8191	2.8230	0.0039	46.2				
	18-May-09	Sunny	0.4E	29	542790	542890	60.0	40	40	1.38	1.38	1.38	82.81	2.8149	2.8199	0.0050	60.4	38.8	327.4/500	NIL	Human activity, traffic noise
		Sunny	0.4E	29	542890	542990	60.0	40	40	1.38	1.38	1.38	82.81	2.8267	2.8281	0.0014	16.9				
		Sunny	0.4E	29	542990	543090	60.0	41	41	1.41	1.41	1.41	84.41	2.7947	2.7980	0.0033	39.1				
	22-May-09	Cloudy	0.6NE	25	543090	543190	60.0	40	40	1.38	1.38	1.38	82.81	2.8417	2.8440	0.0023	27.8	33.0	327.4/500	NIL	Human activity, traffic noise
		Cloudy	0.6NE	25	543190	543290	60.0	40	40	1.38	1.38	1.38	82.81	2.8233	2.8264	0.0031	37.4				
		Cloudy	0.6NE	25	543290	543390	60.0	40	40	1.38	1.38	1.38	82.81	2.8237	2.8265	0.0028	33.8				
27-May-09	Cloudy	0.4E	24	543390	543490	60.0	41	41	1.41	1.41	1.41	84.41	2.8089	2.8102	0.0013	15.4	24.7	327.4/500	NIL	Human activity, traffic noise	
	Cloudy	0.4E	24	543490	543590	60.0	41	41	1.41	1.41	1.41	84.41	2.8364	2.838	0.0016	19.0					
	Cloudy	0.4E	24	543590	543690	60.0	40	40	1.38	1.38	1.38	82.81	2.837	2.8403	0.0033	39.9					
Long Beach Gardens - Outfall (ASR8)	06-May-09	Fine	0.5E	23	597280	597380	60.0	40	40	1.38	1.38	1.38	82.98	2.8953	2.8733	0.0040	48.2	56.6	336.6/500	Excavation by backhoe	Traffic
		Fine	0.5E	23	597380	597480	60.0	40	40	1.38	1.38	1.38	82.98	2.8736	2.8790	0.0054	65.1				
		Fine	0.5E	23	597480	597580	60.0	40	40	1.38	1.38	1.38	82.98	2.8414	2.8461	0.0047	56.6				
	12-May-09	Fine	0.6E	29	597580	597680	60.0	40	40	1.38	1.38	1.38	82.98	2.8942	2.8982	0.0040	48.2	65.5	336.6/500	NIL	Road Traffic
		Fine	0.6E	29	597680	597780	60.0	40	40	1.38	1.38	1.38	82.98	2.8544	2.8584	0.0040	48.2				
		Fine	0.6E	29	597780	597880	60.0	40	40	1.38	1.38	1.38	82.98	2.8486	2.8569	0.0083	100.0				
	18-May-09	Sunny	0.6NE	28	597880	597980	60.0	40	40	1.38	1.38	1.38	82.98	2.8561	2.8635	0.0074	89.2	69.6	336.6/500	Two excavation by backhoe, Two breaking by backhoe	Traffic
		Sunny	0.6NE	28	597980	598080	60.0	39	39	1.36	1.36	1.36	81.47	2.8373	2.8414	0.0041	50.3				
		Sunny	0.6NE	28	598080	598180	60.0	40	39	1.38	1.36	1.37	82.23	2.8212	2.8269	0.0057	69.3				
	22-May-09	Cloudy	0.5NE	25	598180	598280	60.0	40	40	1.38	1.38	1.38	82.98	2.8309	2.8344	0.0035	42.2	38.6	336.6/500	Two excavation by backhoe, Two breaking by backhoe	Traffic
		Cloudy	0.5NE	25	598280	598380	60.0	40	40	1.38	1.38	1.38	82.98	2.7894	2.7924	0.0030	36.2				
		Cloudy	0.5NE	25	598380	598480	60.0	40	40	1.38	1.38	1.38	82.98	2.8178	2.8209	0.0031	37.4				
27-May-09	Cloudy	0.6E	25	598480	598580	60.0	40	40	1.38	1.38	1.38	82.98	2.8412	2.8436	0.0024	28.9	38.6	336.6/500	Two excavation by backhoe	Traffic	
	Cloudy	0.6E	25	598580	598680	60.0	40	40	1.38	1.38	1.38	82.98	2.8454	2.8521	0.0027	29.5					
	Cloudy	0.6E	25	598680	598780	60.0	40	40	1.38	1.38	1.38	82.98	2.8105	2.8150	0.0045	54.2					
Greenview Terrace - Outfall (ASR9)	06-May-09	Fine	0.6E	23	529180	529280	60.0	40	40	1.42	1.42	1.42	84.98	2.8599	2.8629	0.0030	35.3	39.2	329.2/500	Excavation by backhoe	Traffic
		Fine	0.6E	23	529280	529380	60.0	40	40	1.42	1.42	1.42	84.98	2.8556	2.8595	0.0039	45.9				
		Fine	0.6E	23	529380	529480	60.0	40	40	1.42	1.42	1.42	84.98	2.8470	2.8501	0.0031	36.5				
	12-May-09	Fine	0.6E	29	529480	529580	60.0	40	40	1.42	1.42	1.42	84.98	2.8389	2.8424	0.0035	41.2	64.7	329.2/500	Soil uploading to dump truck, construction of soil nail	Road Traffic
		Fine	0.6E	29	529580	529680	60.0	40	40	1.42	1.42	1.42	84.98	2.8519	2.8589	0.0070	82.4				
		Fine	0.6E	29	529680	529780	60.0	40	40	1.42	1.42	1.42	84.98	2.8178	2.8238	0.0060	70.6				
	18-May-09	Sunny	0.7NE	29	529780	529880	60.0	40	40	1.42	1.42	1.42	84.98	2.8648	2.8772	0.0124	145.9	109.4	329.2/500	Two excavation by backhoe, Two breaking by backhoe	Traffic
		Sunny	0.7NE	29	529880	529980	60.0	40	40	1.42	1.42	1.42	84.98	2.8089	2.8155	0.0066	77.7				
		Sunny	0.7NE	29	529980	530080	60.0	40	40	1.42	1.42	1.42	84.98	2.8355	2.8444	0.0089	104.7				
	22-May-09	Cloudy	0.6NE	25	530080	530180	60.0	40	40	1.42	1.42	1.42	84.98	2.8535	2.8557	0.0022	25.9	30.6	329.2/500	Two excavation by backhoe, Two breaking by backhoe	Traffic
		Cloudy	0.6NE	25	530180	530280	60.0	40	40	1.42	1.42	1.42	84.98	2.8356	2.8381	0.0025	29.4				
		Cloudy	0.6NE	25	530280	530380	60.0	40	40	1.42	1.42	1.42	84.98	2.8459	2.8470	0.0031	35.5				
27-May-09	Cloudy	0.6E	24	530380	530480	60.0	40	40	1.42	1.42	1.42	84.98	2.8469	2.8518	0.0029	34.1	37.7	329.2/500	Two excavation by backhoe	Traffic	
	Cloudy	0.6E	24	530480	530580	60.0	40	40	1.42	1.42	1.42	84.98	2.8467	2.8490	0.0023	27.1					
	Cloudy	0.6E	24	530580	530680	60.0	40	40	1.42	1.42	1.42	84.98	2.8157	2.8181	0.0044	51.8					

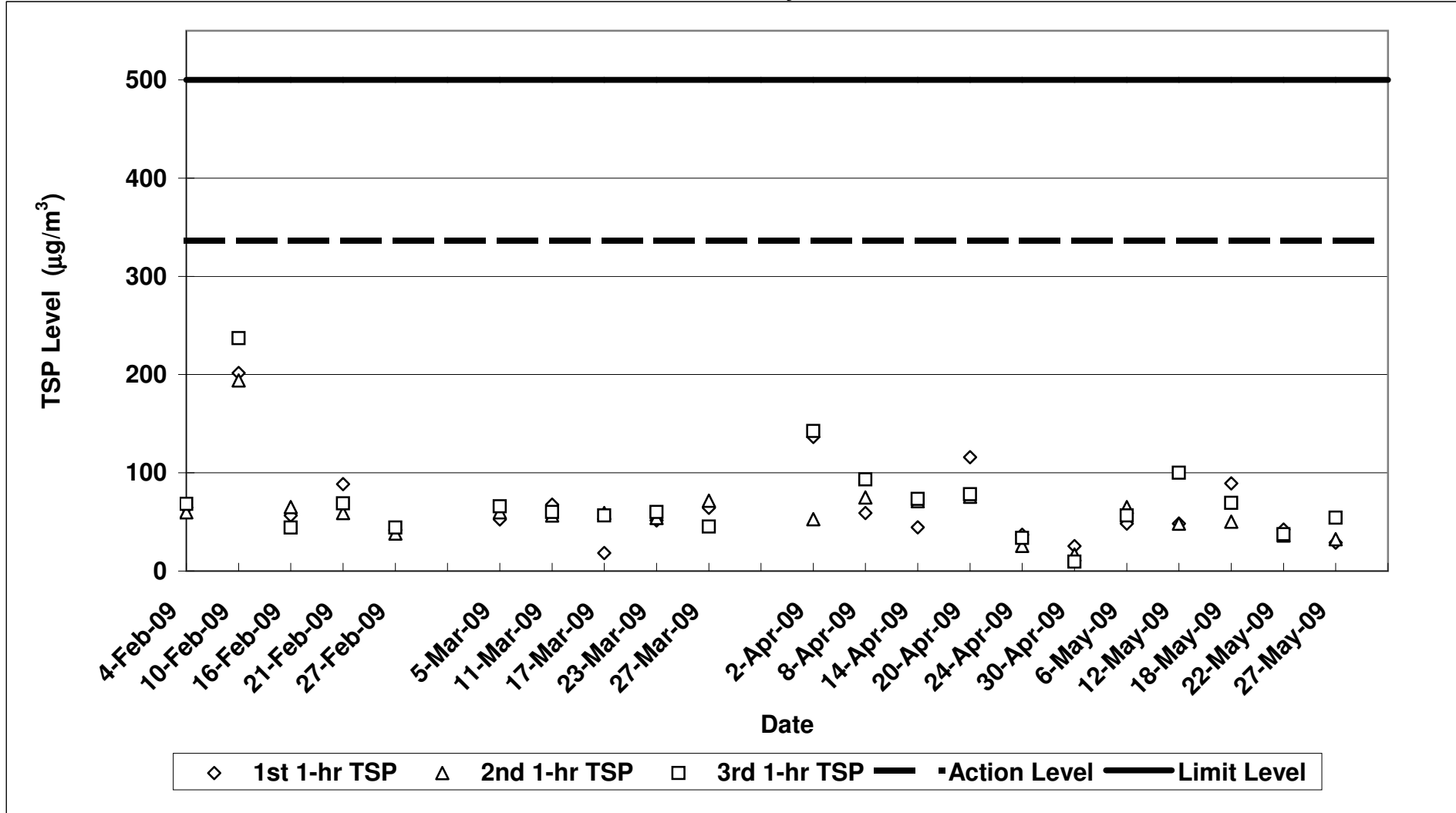
**Contract No. DC/2007/12 - Design and Construction of Tsuen Wan Drainage Tunnel
 Air Quality Monitoring (1-hr TSP) Results at Sik Sik Yuen Ho Fung College - Intake (ASR1)
 Feb-09 to May-09**



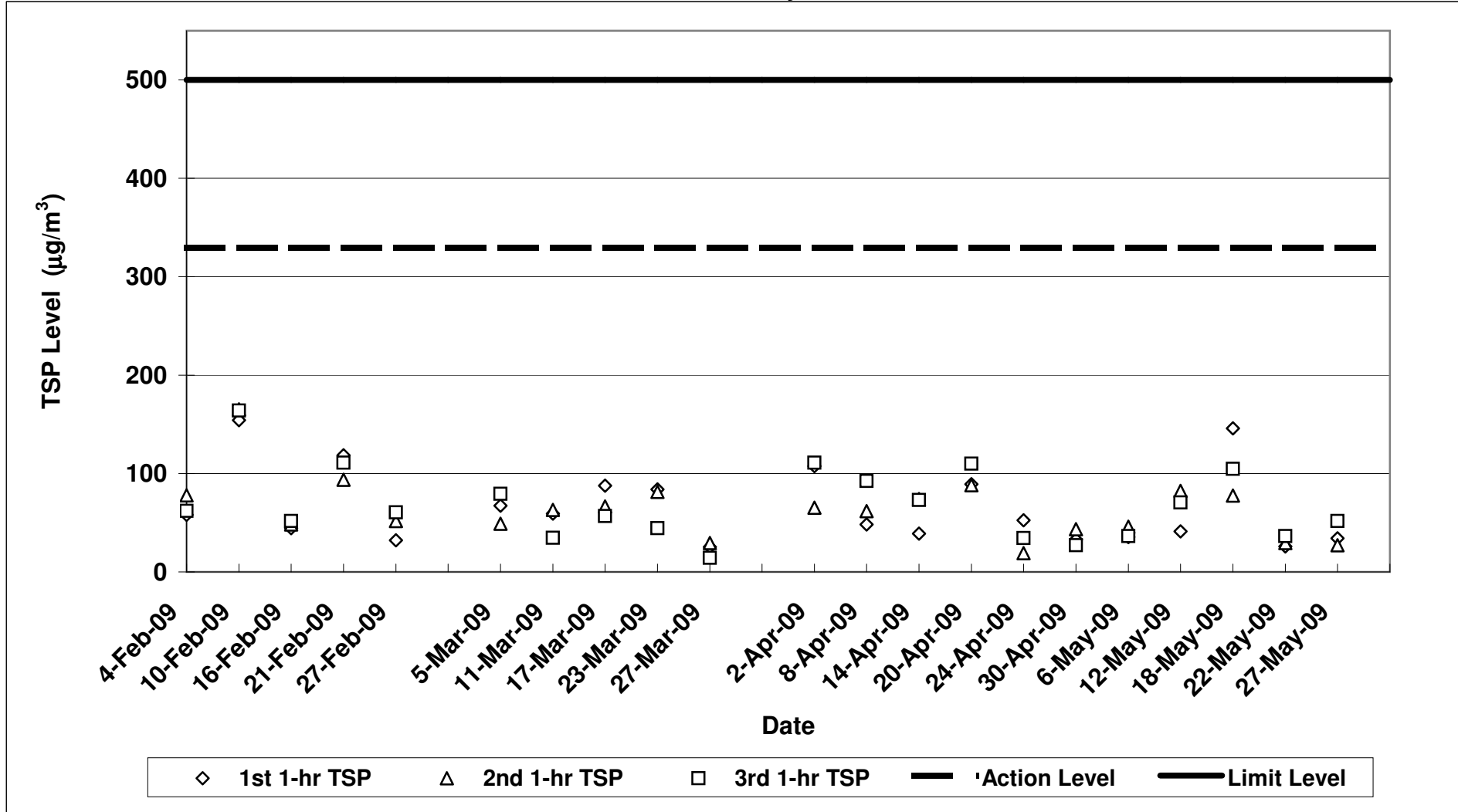
**Contract No. DC/2007/12 - Design and Construction of Tsuen Wan Drainage Tunnel
 Air Quality Monitoring (1-hr TSP) Results at Hong Hoi Chee Hong Temple - Intake (ASR3)
 Feb-09 to May-09**



**Contract No. DC/2007/12 - Design and Construction of Tsuen Wan Drainage Tunnel
 Air Quality Monitoring (1-hr TSP) Results at Long Beach Gardens - Outfall (ASR8)
 Feb-09 to May-09**



**Contract No. DC/2007/12 - Design and Construction of Tsuen Wan Drainage Tunnel
 Air Quality Monitoring (1-hr TSP) Results at Greenview Terrance - Outfall (ASR9)
 Feb-09 to May-09**



Contract No. DC/2007/12 - Design and Construction of Tsuen Wan Drainage Tunnel

Noise Impact Monitoring Results

Monitoring Locations	Date	Weather Conditions	Temperature (°C)	Wind Speed (m/s)	Wind Direction	Start Time	End Time	BL ¹ dB(A)	LL ² dB(A)	L _{eq} (30min) dB(A)	L ₁₀ (30min) dB(A)	L ₉₀ (30min) dB(A)	CNL ³ dB(A)	Observation / Site Condition	Remark
Sik Sik Yuen Ho Fung College NSR 1	06-May-09	Fine	23	0.6	E	13:15	13:45	66.1	70	64.5	67.6	61.4	-	Nil	Traffic noise
	12-May-09	Sunny	31	0.5	NE	17:00	17:30		70	64.3	67.1	61.4	-	Excavation by backhoe	Traffic noise
	18-May-09	Sunny	29	0.6	NE	13:30	14:00		70	68.2	70.3	64.8	-	Breaking by backhoe	Traffic noise
	27-May-09	Cloudy	24	0.5	E	13:30	14:00		70	64.6	67.6	61.3	-	Breaking by backhoe	Traffic noise
	-	-	-	-	-	-	-		-	-	-	-	-	-	-
Hong Hoi Chee Hong Temple NSR 3	06-May-09	Fine	23	0.6	NE	11:30	12:00	57.9	75	67.9	70.0	65.7	-	Nil	Traffic noise , water fall
	12-May-09	Sunny	29	0.3	NE	11:30	12:00		75	65.3	67.9	62.5	-	Nil	Traffic noise , water fall
	18-May-09	Sunny	31	0.4	E	11:30	12:00		75	67.4	69.3	64.6	-	Nil	Traffic noise , water fall
	27-May-09	Cloudy	24	0.5	E	11:30	12:00		75	67.3	69.6	64.7	-	Nil	Traffic noise , water fall
	-	-	-	-	-	-	-		-	-	-	-	-	-	-
Squatters NSR 6	06-May-09	Fine	23	0.5	E	16:00	16:30	61.2	75	63.1	66.3	60.2	-	Nil	Traffic noise , water fall
	12-May-09	Sunny	28	0.4	E	11:30	12:00		75	61.6	64.5	58.3	-	Excavation by backhoe	Traffic noise , water fall
	18-May-09	Sunny	30	0.3	NE	15:15	15:45		75	62.0	64.7	59.2	-	Excavation by backhoe	Water fall
	27-May-09	Cloudy	24	0.5	E	15:00	15:30		75	61.1	63.9	57.9	-	Excavation by backhoe	Water fall
	-	-	-	-	-	-	-		-	-	-	-	-	-	-
Long Beach Gardens NSR 8	06-May-09	Fine	23	0.5	E	09:22	09:25	60.9	75	62.1	65.1	58.0	-	Excavation by backhoe	Traffic noise
	12-May-09	Sunny	29	0.9	E	12:50	13:20		75	64.1	66.9	63.9	-	Nil	Traffic noise
	18-May-09	Sunny	28	0.5	NE	10:40	11:10		75	61.0	63.6	57.1	-	2 backhoe excavation and 2 backhoe breaking	Traffic noise
	27-May-09	Cloudy	24	0.6	E	16:22	16:52		75	62.1	64.6	58.8	-	2 excavation by backhoe	Traffic noise
	-	-	-	-	-	-	-		-	-	-	-	-	-	-
Greenview Terrace NSR 9	06-May-09	Fine	23	0.6	E	11:30	12:00	59.7	75	62.4	65.4	59.5	-	Excavation by backhoe	Traffic noise , water fall
	12-May-09	Sunny	29	0.8	E	13:50	14:20		75	71.1	73.6	67.3	-	Soil Nail, Soil & Gravel Uploading	Traffic noise , water fall
	18-May-09	Sunny	30	0.6	NE	12:00	12:30		75	70.8	73.3	68.3	-	2 backhoe excavation and 2 backhoe breaking	Traffic noise , water fall
	27-May-09	Cloudy	24	0.6	E	14:15	14:45		75	72.2	74.2	68.1	-	2 excavation by backhoe	Traffic noise
	-	-	-	-	-	-	-		-	-	-	-	-	-	-

1: Baseline Noise Level

2: Limit Level

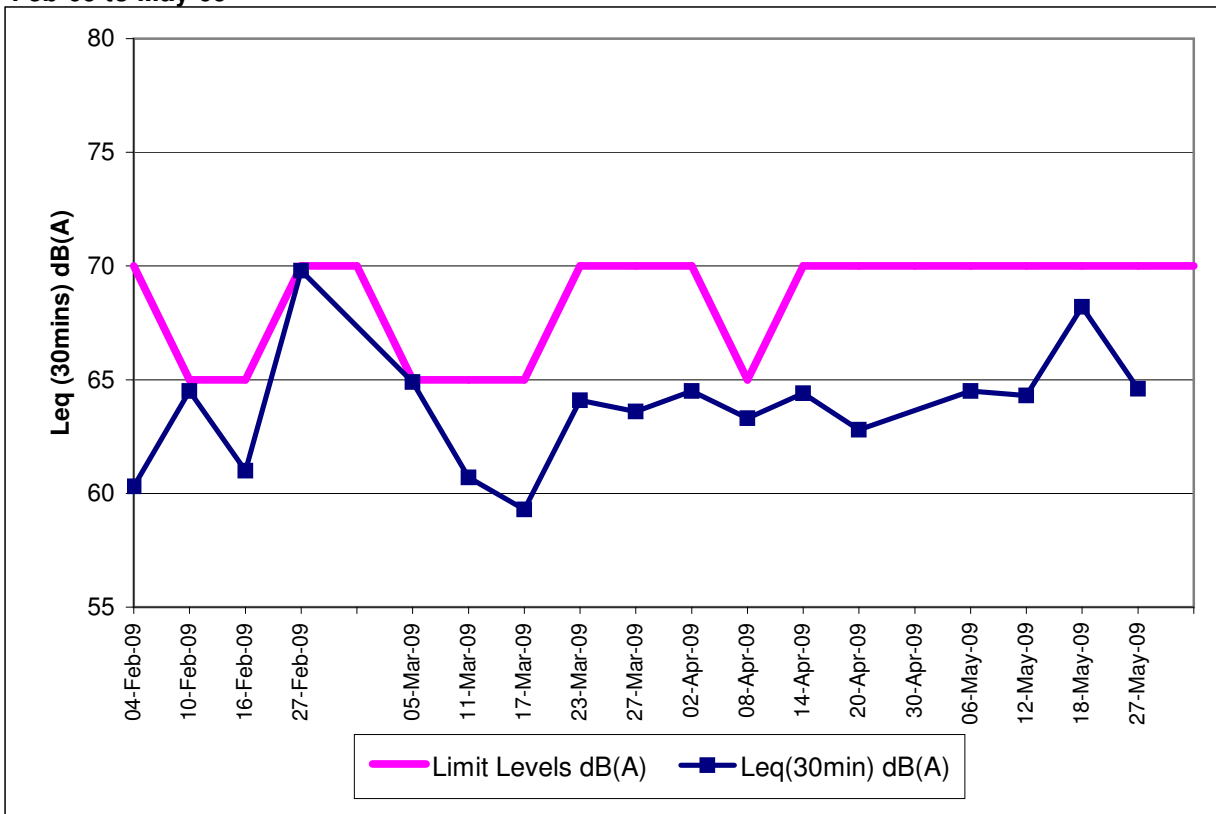
3: Corrected Noise Level

Note:

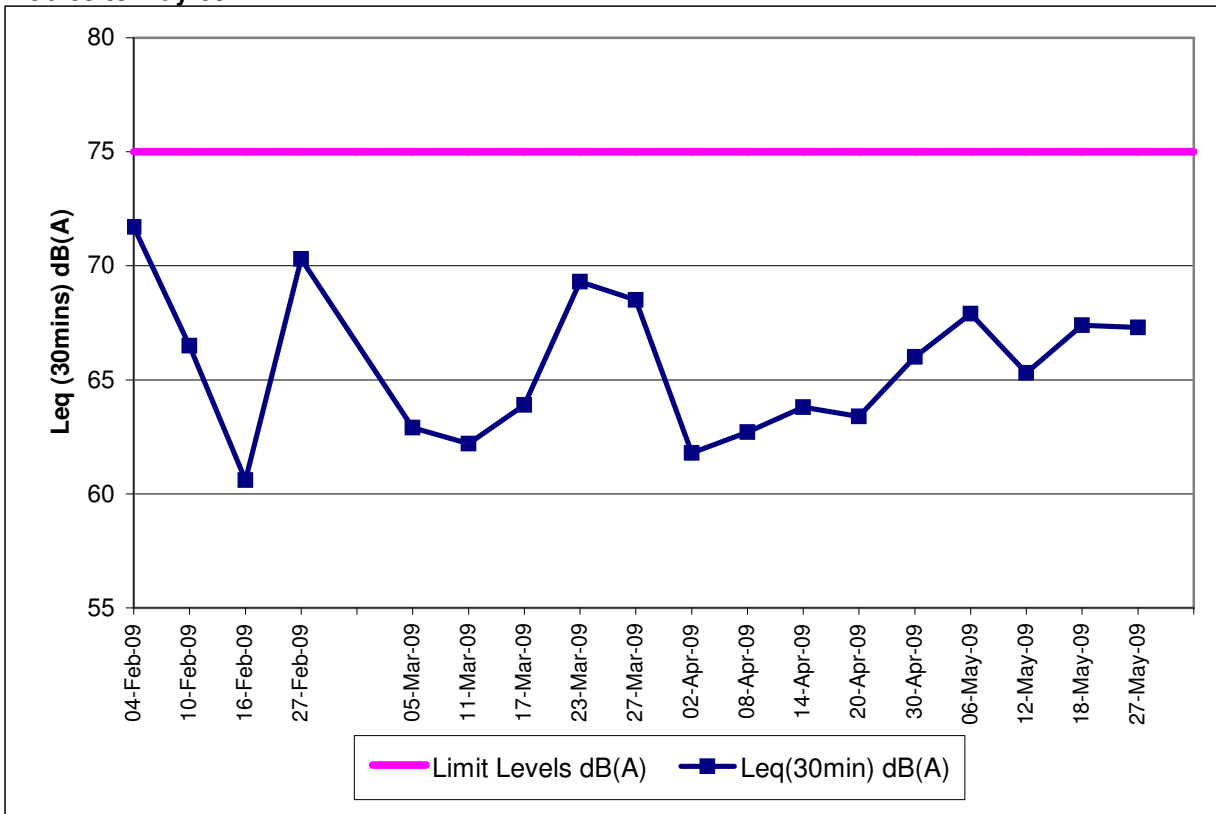
The limit level of NSR1 is 65dB(A) during school examination period.

Red Bold indicates an exceedance of Limit Level

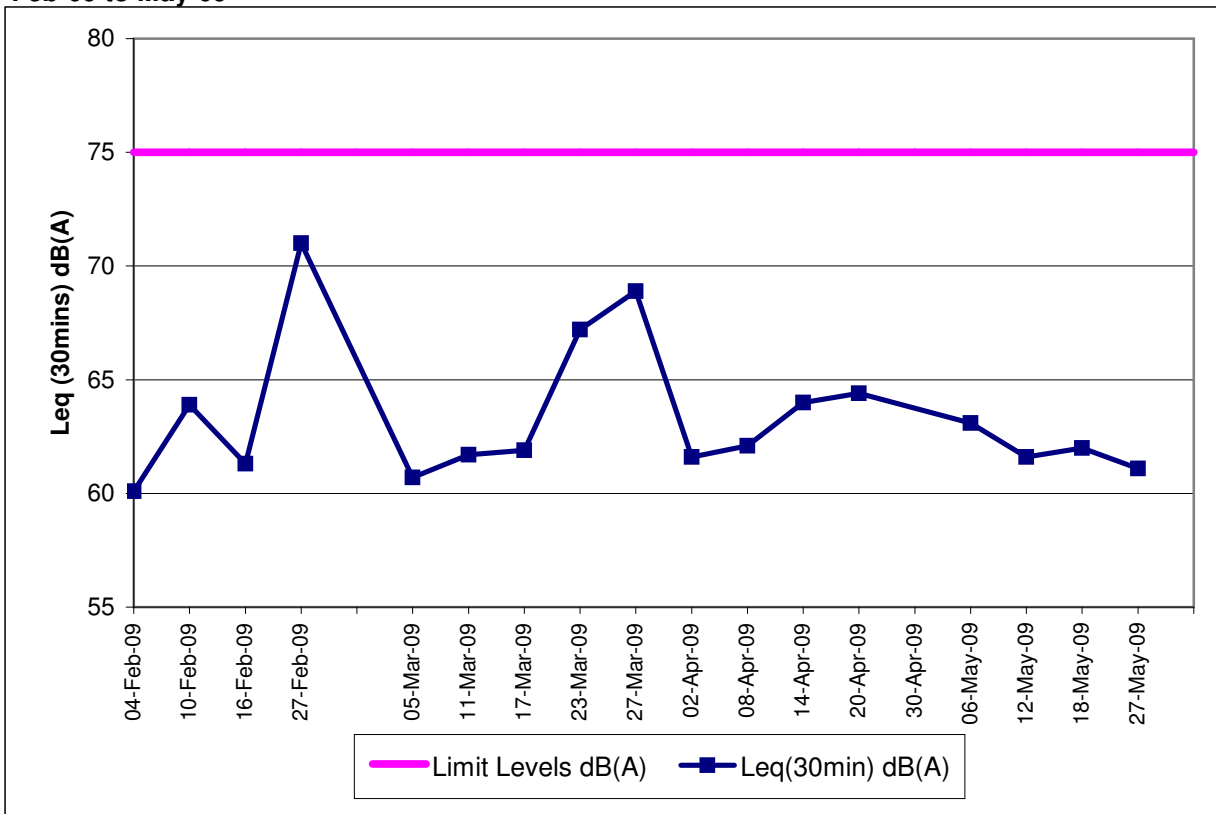
**Contract No. DC/2007/12 - Design and Construction of Tsuen Wan Drainage Tunnel
Noise Monitoring Results at Sik Sik Yuen Ho Fung College (NSR 1)
Feb-09 to May-09**



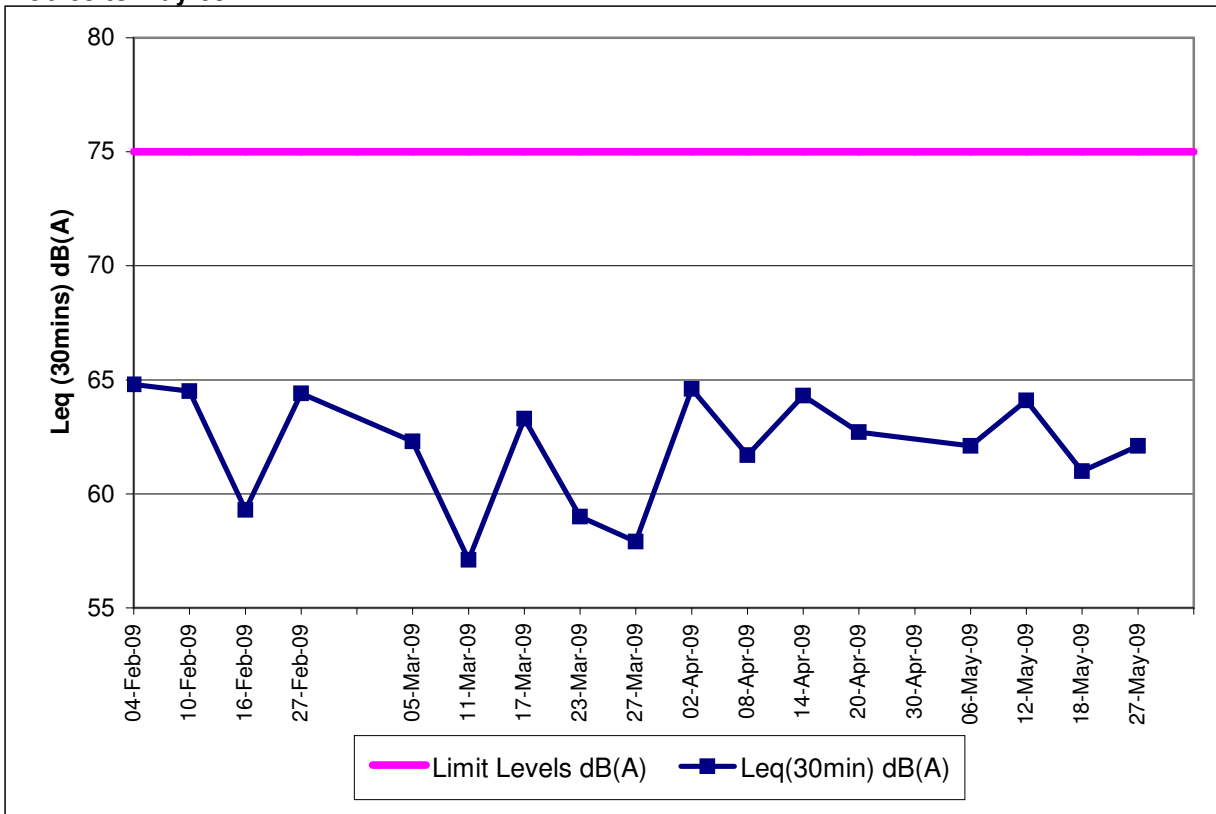
**Contract No. DC/2007/12 - Design and Construction of Tsuen Wan Drainage Tunnel
Noise Monitoring Results at Hong Hoi Chee Hong Temple (NSR 3)
Feb-09 to May-09**



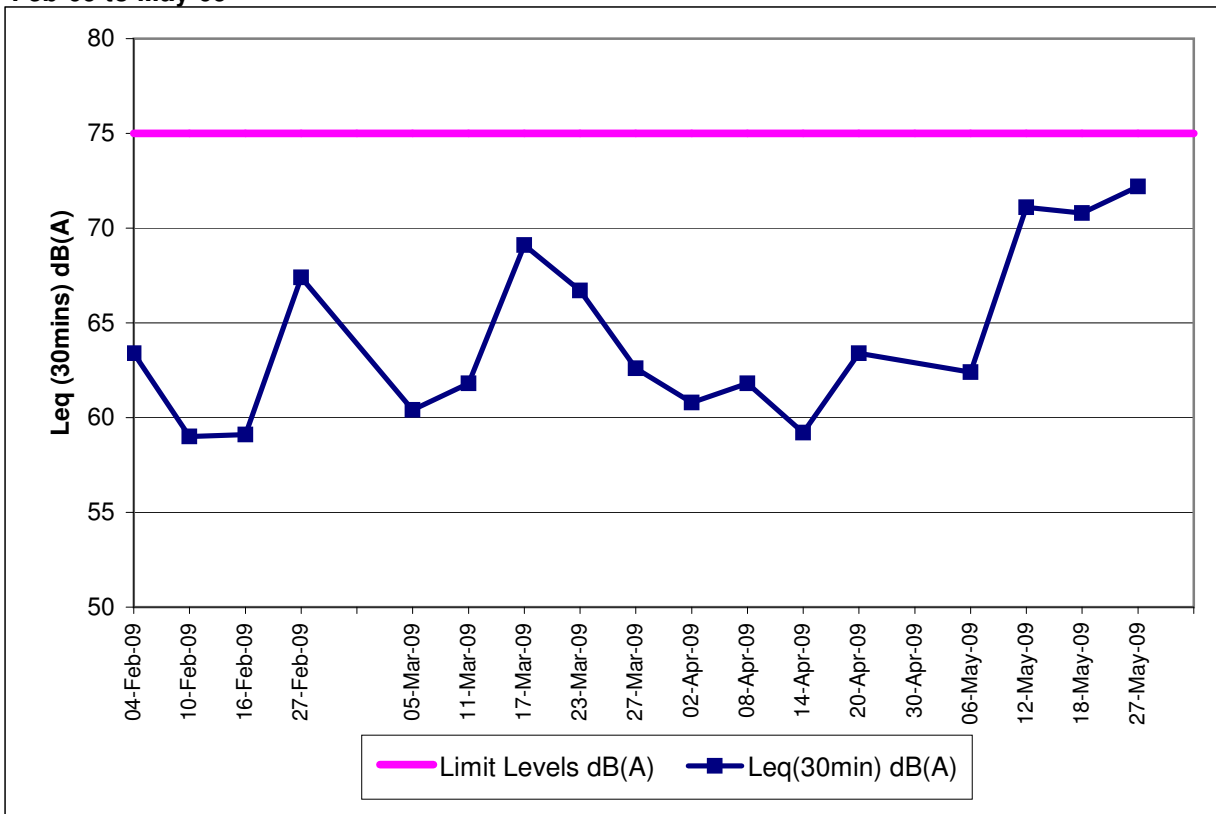
**Contract No. DC/2007/12 - Design and Construction of Tsuen Wan Drainage Tunnel
Noise Monitoring Results at Squatters (NSR 6)
Feb-09 to May-09**



**Contract No. DC/2007/12 - Design and Construction of Tsuen Wan Drainage Tunnel
Noise Monitoring Results at Long Beach Gardens (NSR 8)
Feb-09 to May-09**



**Contract No. DC/2007/12 - Design and Construction of Tsuen Wan Drainage Tunnel
Noise Monitoring Results at Greenview Terrace (NSR 9)
Feb-09 to May-09**

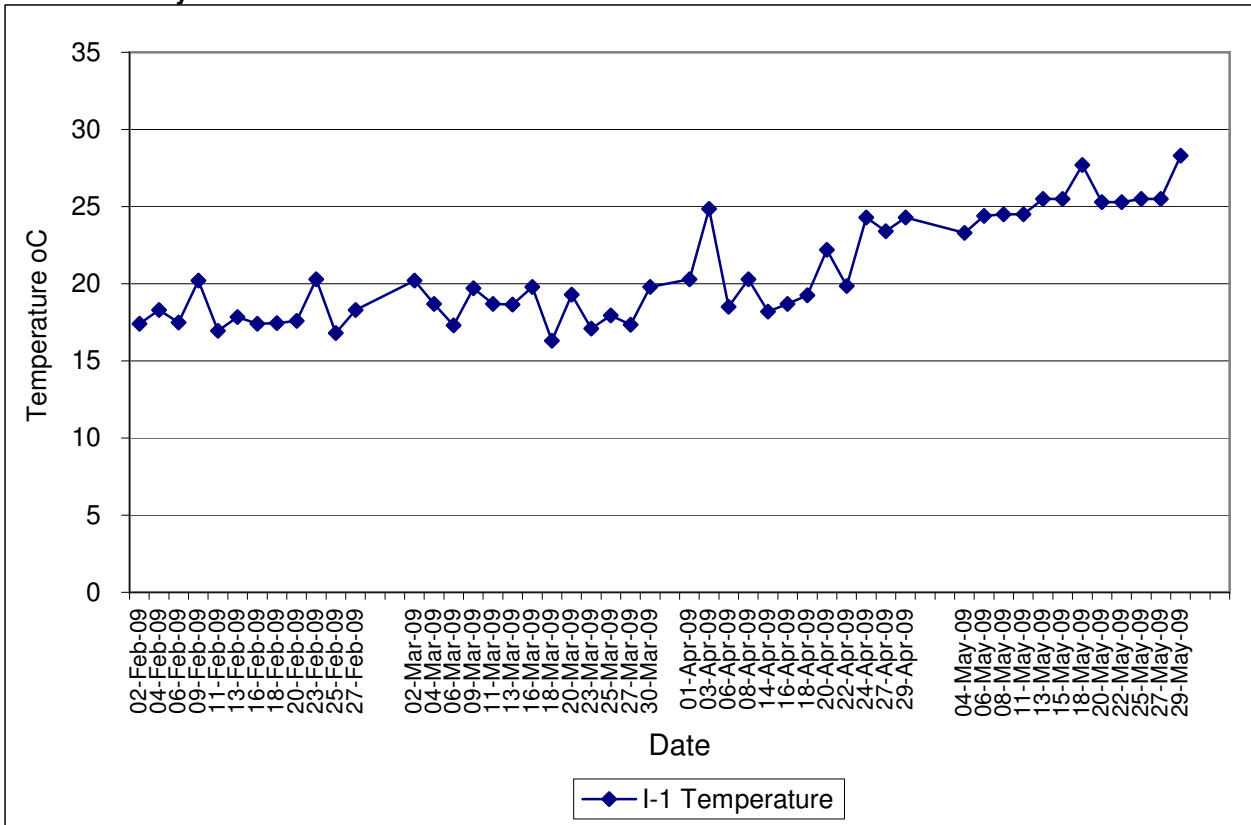


Contract No. DC/2007/12 - Design and Construction of Tsuen Wan Drainage Tunnel

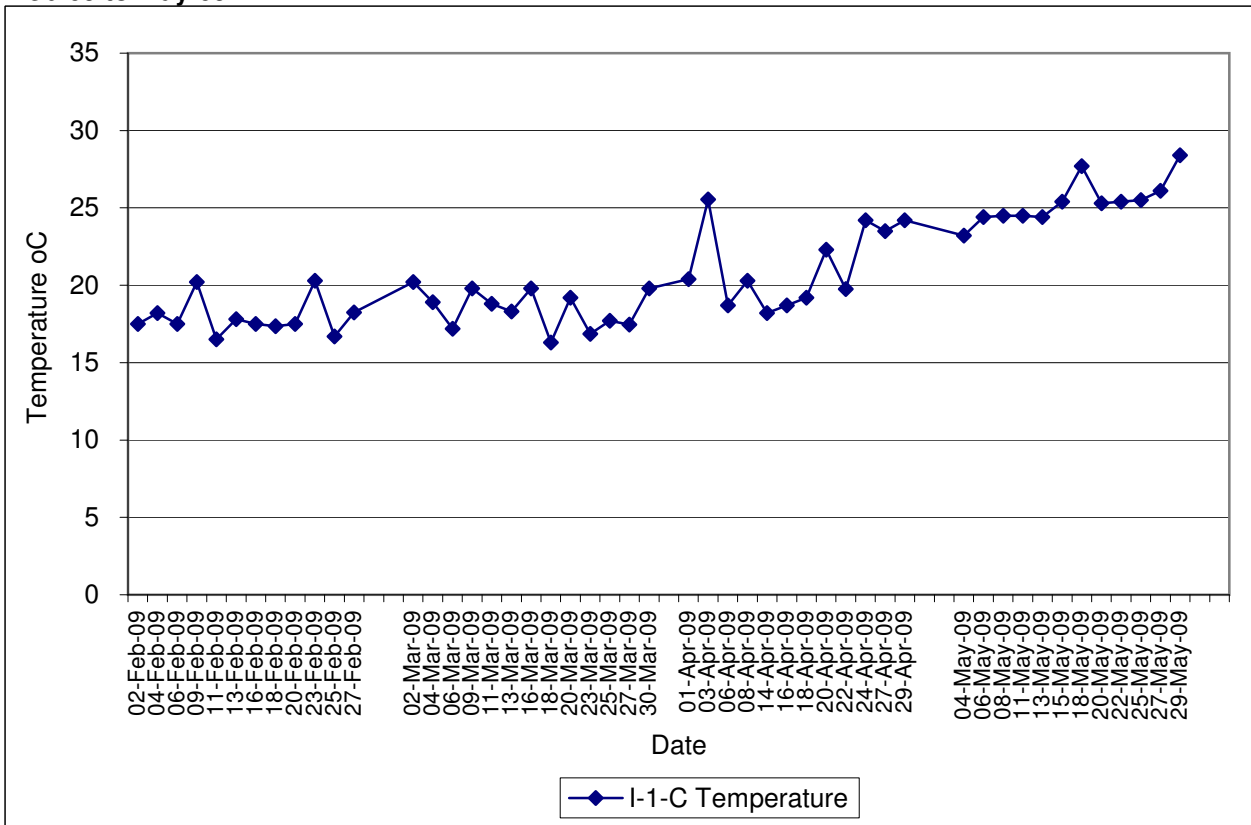
Water Quality Impact Monitoring Results

Monitoring Locations	Date	Start Time	Weather	Water Depth(m)	Temp			DO(mg/L)			Action/Limit Level of DO(mg/L)	pH			Turbidity(NTU)			Action/Limit Level of Tby	SS (mg/L)			Action/Limit Level of SS(mg/L)	Remarks:	Action to be taken
					1	2	Avg	1	2	Avg		1	2	Avg	1	2	Avg		1	2	Avg			
Sik Sik Yuen Ho Fung College I-1	04-May-09	09:15	Fine	<1	23.30	23.30	23.30	6.28	6.17	6.23	3.42 / 3.34	7.12	7.12	7.12	6.27	6.11	6.19	9.75 / 12.47	2.0	2.0	2.0	8.85 / 10.17	Nil	Nil
	06-May-09	15:28	Fine	<1	24.40	24.40	24.40	6.21	6.23	6.22	7.23	7.23	7.23	5.45	5.45	5.45	2.0	2.0	2.0	2.0	2.0	2.0	Nil	Nil
	08-May-09	09:25	Sunny	<1	24.50	24.50	24.50	6.15	6.17	6.16	7.22	7.22	7.22	4.21	4.25	4.23	2.0	2.0	2.0	2.0	2.0	2.0	Nil	Nil
	11-May-09	09:22	Sunny	<1	24.50	24.50	24.50	6.17	6.19	6.18	7.22	7.22	7.22	5.21	5.25	5.23	2.0	2.0	2.0	2.0	2.0	2.0	Nil	Nil
	13-May-09	09:21	Sunny	<1	25.30	25.70	25.50	6.42	6.45	6.44	7.23	7.23	7.23	6.15	6.17	6.16	2.0	2.0	2.0	2.0	2.0	2.0	Nil	Nil
	15-May-09	09:38	Sunny	<1	25.50	25.50	25.50	6.41	6.46	6.44	7.22	7.22	7.22	6.07	5.82	5.95	2.0	2.0	2.0	2.0	2.0	2.0	Nil	Nil
	18-May-09	13:45	Sunny	<1	27.70	27.70	27.70	6.43	6.48	6.46	7.22	7.22	7.22	5.42	5.12	5.27	2.0	2.0	2.0	2.0	2.0	2.0	Nil	Nil
	20-May-09	09:36	Sunny	<1	25.30	25.30	25.30	5.36	5.33	5.35	7.32	7.32	7.32	5.20	5.17	5.19	3.7	4.0	3.9	2.0	2.0	2.0	Nil	Nil
	22-May-09	09:35	Cloudy	<1	25.30	25.30	25.30	5.66	5.57	5.62	7.22	7.21	7.22	5.28	5.24	5.26	2.0	2.0	2.0	2.0	2.0	2.0	Nil	Nil
	25-May-09	09:48	Cloudy	<1	25.50	25.50	25.50	5.52	5.57	5.55	5.58	5.58	5.58	6.17	6.24	6.21	5.2	4.8	5.0	2.0	2.0	2.0	Nil	Nil
	27-May-09	09:46	Cloudy	<1	25.50	25.50	25.50	5.17	5.19	5.18	7.00	7.04	7.02	5.89	6.02	5.96	2.8	2.9	2.9	2.0	2.0	2.0	Nil	Nil
	29-May-09	09:50	Cloudy	<1	28.30	28.30	28.30	6.17	6.20	6.19	7.21	7.22	7.22	6.08	6.10	6.09	2.0	2.0	2.0	2.0	2.0	2.0	Nil	Nil
	-	-	-	-	-	-	-	-	-	-	-	-	-	-	-	-	-	-	-	-	-	-	-	-
	-	-	-	-	-	-	-	-	-	-	-	-	-	-	-	-	-	-	-	-	-	-	-	-
	Sik Sik Yuen Ho Fung College I-1-C	04-May-09	09:09	Fine	<1	23.20	23.20	23.20	6.25	6.23	6.24	-/-	7.12	7.12	7.12	6.22	6.25	6.24	-/-	2.0	2.0	2.0	-/-	Nil
06-May-09		15:00	Fine	<1	24.40	24.40	24.40	6.17	6.19	6.18	7.23	7.23	7.23	5.52	5.53	5.53	2.0	2.0	2.0	2.0	2.0	2.0	Nil	Nil
08-May-09		09:02	Sunny	<1	24.50	24.50	24.50	6.53	6.58	6.56	7.22	7.22	7.22	4.71	4.52	4.62	2.0	2.0	2.0	2.0	2.0	2.0	Nil	Nil
11-May-09		09:05	Sunny	<1	24.50	24.50	24.50	6.11	6.07	6.09	7.21	7.22	7.22	5.33	5.37	5.35	2.0	2.0	2.0	2.0	2.0	2.0	Nil	Nil
13-May-09		09:07	Sunny	<1	24.40	24.40	24.40	6.43	6.41	6.42	7.44	7.42	7.43	6.23	6.33	6.28	2.0	2.0	2.0	2.0	2.0	2.0	Nil	Backhoe excavation
15-May-09		09:17	Sunny	<1	25.40	25.40	25.40	6.33	6.42	6.38	7.22	7.22	7.22	6.12	6.11	6.12	2.0	2.0	2.0	2.0	2.0	2.0	Nil	Backhoe excavation
18-May-09		13:23	Sunny	<1	27.70	27.70	27.70	6.53	6.51	6.52	7.23	7.23	7.23	5.32	5.33	5.32	2.0	2.0	2.0	2.0	2.0	2.0	Nil	Backhoe excavation x2
20-May-09		09:12	Sunny	<1	25.30	25.30	25.30	5.44	5.48	5.46	7.32	7.32	7.32	5.09	5.11	5.10	4.3	4.0	4.2	2.0	2.0	2.0	Nil	Backhoe excavation x2
22-May-09		09:11	Cloudy	<1	25.40	25.40	25.40	5.67	5.69	5.68	7.22	7.22	7.22	5.36	5.33	5.35	2.0	2.0	2.0	2.0	2.0	2.0	Nil	Backhoe excavation x2
25-May-09		09:23	Cloudy	<1	25.50	25.50	25.50	5.71	5.68	5.70	5.59	5.59	5.59	6.32	6.45	6.39	5.3	5.1	5.2	2.0	2.0	2.0	Nil	Backhoe excavation x2
27-May-09		09:21	Cloudy	<1	26.10	26.10	26.10	6.67	6.69	6.68	7.02	7.04	7.03	6.12	6.07	6.10	4.6	4.6	4.6	2.0	2.0	2.0	Nil	Backhoe excavation x3
29-May-09		09:30	Cloudy	<1	28.40	28.40	28.40	6.20	6.24	6.22	7.21	7.21	7.21	6.21	6.17	6.19	2.0	2.0	2.0	2.0	2.0	2.0	Nil	Backhoe excavation x3
-		-	-	-	-	-	-	-	-	-	-	-	-	-	-	-	-	-	-	-	-	-	-	-
-		-	-	-	-	-	-	-	-	-	-	-	-	-	-	-	-	-	-	-	-	-	-	-
Hong Hoi Chee Hong Temple I-2		04-May-09	10:35	Fine	<1	22.30	22.30	22.30	6.31	6.27	6.29	3.66 / 3.63	7.22	7.22	7.22	5.16	5.14	5.15	6.63 / 6.99	2.0	2.0	2.0	7.68 / 8.34	Nil
	06-May-09	11:48	Fine	<1	24.20	24.30	24.25	6.20	6.26	6.23	7.25	7.29	7.27	5.32	5.36	5.34	2.0	2.0	2.0	2.0	2.0	2.0	Nil	Nil
	08-May-09	10:34	Sunny	<1	24.50	24.50	24.50	6.22	6.21	6.22	7.21	7.21	7.21	4.15	4.14	4.15	2.0	2.0	2.0	2.0	2.0	2.0	Nil	Nil
	11-May-09	10:35	Sunny	<1	25.50	25.50	25.50	6.41	6.43	6.42	7.32	7.31	7.32	4.22	4.27	4.25	2.0	2.0	2.0	2.0	2.0	2.0	Nil	Nil
	13-May-09	10:47	Sunny	<1	24.70	24.80	24.75	6.41	6.43	6.42	7.22	7.22	7.22	6.23	6.20	6.22	2.0	2.0	2.0	2.0	2.0	2.0	Nil	Nil
	15-May-09	10:52	Sunny	<1	25.50	25.50	25.50	6.42	6.48	6.45	7.20	7.20	7.20	5.12	5.11	5.12	2.0	2.0	2.0	2.0	2.0	2.0	Nil	Nil
	18-May-09	10:38	Sunny	<1	26.70	26.70	26.70	6.17	6.20	6.19	7.21	7.21	7.21	4.15	4.14	4.15	2.0	2.0	2.0	2.0	2.0	2.0	Nil	Nil
	20-May-09	10:59	Sunny	<1	25.30	25.30	25.30	5.40	5.47	5.44	7.23	7.23	7.23	4.76	4.63	4.70	3.4	3.4	3.4	2.0	2.0	2.0	Nil	Nil
	22-May-09	10:38	Cloudy	<1	25.70	25.70	25.70	5.64	5.66	5.65	7.27	7.27	7.27	5.22	5.35	5.29	2.0	2.0	2.0	2.0	2.0	2.0	Nil	Nil
	25-May-09	11:06	Cloudy	<1	25.50	25.50	25.50	5.72	5.78	5.75	5.72	5.72	5.72	6.12	6.07	6.10	2.0	2.0	2.0	2.0	2.0	2.0	Nil	Nil
	27-May-09	11:50	Cloudy	<1	26.20	26.00	26.10	6.42	6.44	6.43	7.02	7.01	7.02	4.17	4.11	4.14	3.4	3.5	3.5	2.0	2.0	2.0	Nil	Nil
	29-May-09	10:22	Cloudy	<1	28.30	28.30	28.30	6.14	6.20	6.17	7.22	7.22	7.22	5.31	5.28	5.30	2.0	2.0	2.0	2.0	2.0	2.0	Nil	Nil
	-	-	-	-	-	-	-	-	-	-	-	-	-	-	-	-	-	-	-	-	-	-	-	-
	-	-	-	-	-	-	-	-	-	-	-	-	-	-	-	-	-	-	-	-	-	-	-	-
	Hong Hoi Chee Hong Temple I-2-C	04-May-09	10:11	Fine	<1	22.30	22.30	22.30	6.28	6.29	6.29	-/-	7.22	7.22	7.22	5.21	5.24	5.23	-/-	2.0	2.0	2.0	-/-	Nil
06-May-09		11:30	Fine	<1	24.20	24.20	24.20	6.22	6.36	6.29	7.22	7.22	7.22	5.44	5.46	5.45	2.0	2.0	2.0	2.0	2.0	2.0	Nil	Nil
08-May-09		10:22	Sunny	<1	24.20	24.20	24.20	6.07	6.08	6.08	7.21	7.21	7.21	4.21	4.44	4.33	2.0	2.0	2.0	2.0	2.0	2.0	Nil	Nil
11-May-09		10:22	Sunny	<1	25.30	25.30	25.30	6.22	6.29	6.26	7.21	7.21	7.21	4.52	4.55	4.54	2.0	2.0	2.0	2.0	2.0	2.0	Nil	Nil
13-May-09		10:22	Sunny	<1	24.30	24.20	24.25	6.32	6.37	6.35	7.22	7.22	7.22	6.52	6.41	6.47	2.0	2.0	2.0	2.0	2.0	2.0	Nil	Piling
15-May-09		10:22	Sunny	<1	25.40	25.40	25.40	6.37	6.39	6.38	7.20	7.20	7.20	5.22	5.23	5.23	2.0	2.0	2.0	2.0	2.0	2.0	Nil	Nil
18-May-09		10:22	Sunny	<1	26.50	26.50	26.50	6.31	6.29	6.30	7.22	7.22	7.22	4.22	4.21	4.22	2.0	2.0	2.0	2.0	2.0	2.0	Nil	Nil
20-May-09		10:40	Sunny	<1	25.40	25.40	25.40	5.33	5.30	5.32	7.21	7.21	7.21	4.82	4.88	4.85	2.8	2.9	2.9	2.0	2.0	2.0	Nil	Nil
22-May-09		10:27	Cloudy	<1	25.70	25.70	25.70	5.72	5.75	5.74	7.27	7.27	7.27	5.20	5.18	5.19	2.0	2.0	2.0	2.0	2.0	2.0	Nil	Nil
25-May-09		10:45	Cloudy	<1	25.30	25.30	25.30	5.84	5.89	5.87	5.72	5.72	5.72	6.22	6.17	6.20	2.0	2.0	2.0	2.0</				

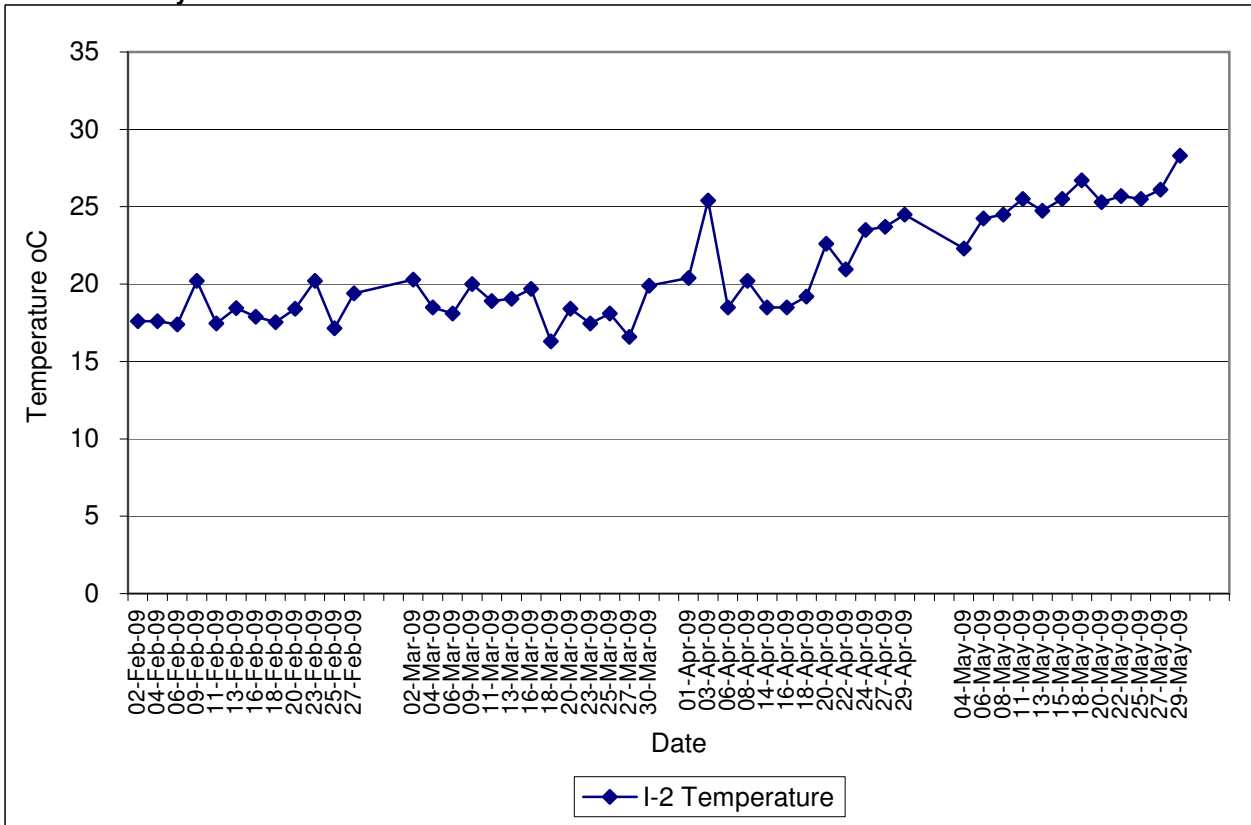
**Contract No. DC/2007/12 - Design and Construction of Tsuen Wan Drainage Tunnel
 Water Quality Results at Sik Sik Yuen Ho Fung College (I-1)
 Feb-09 to May-09**



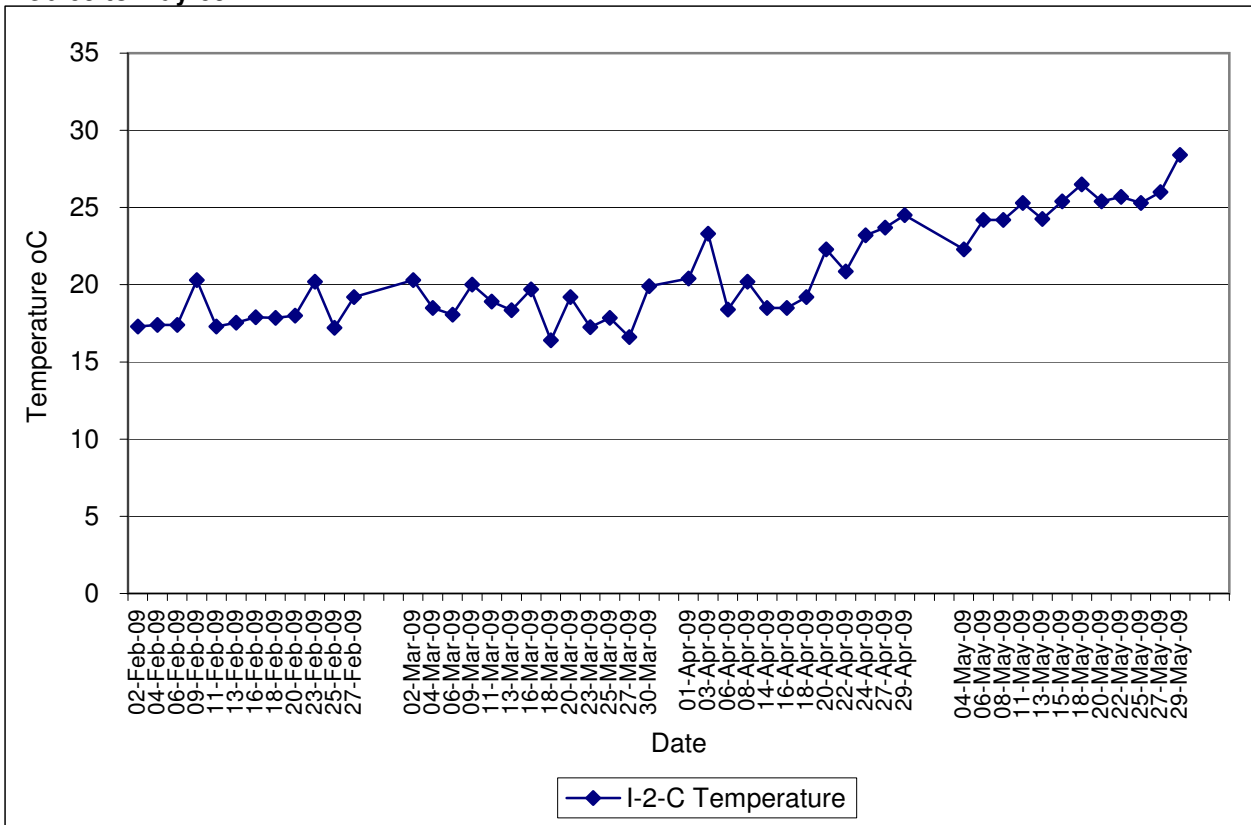
**Contract No. DC/2007/12 - Design and Construction of Tsuen Wan Drainage Tunnel
 Water Quality Results at Sik Sik Yuen Ho Fung College (I-1-C)
 Feb-09 to May-09**



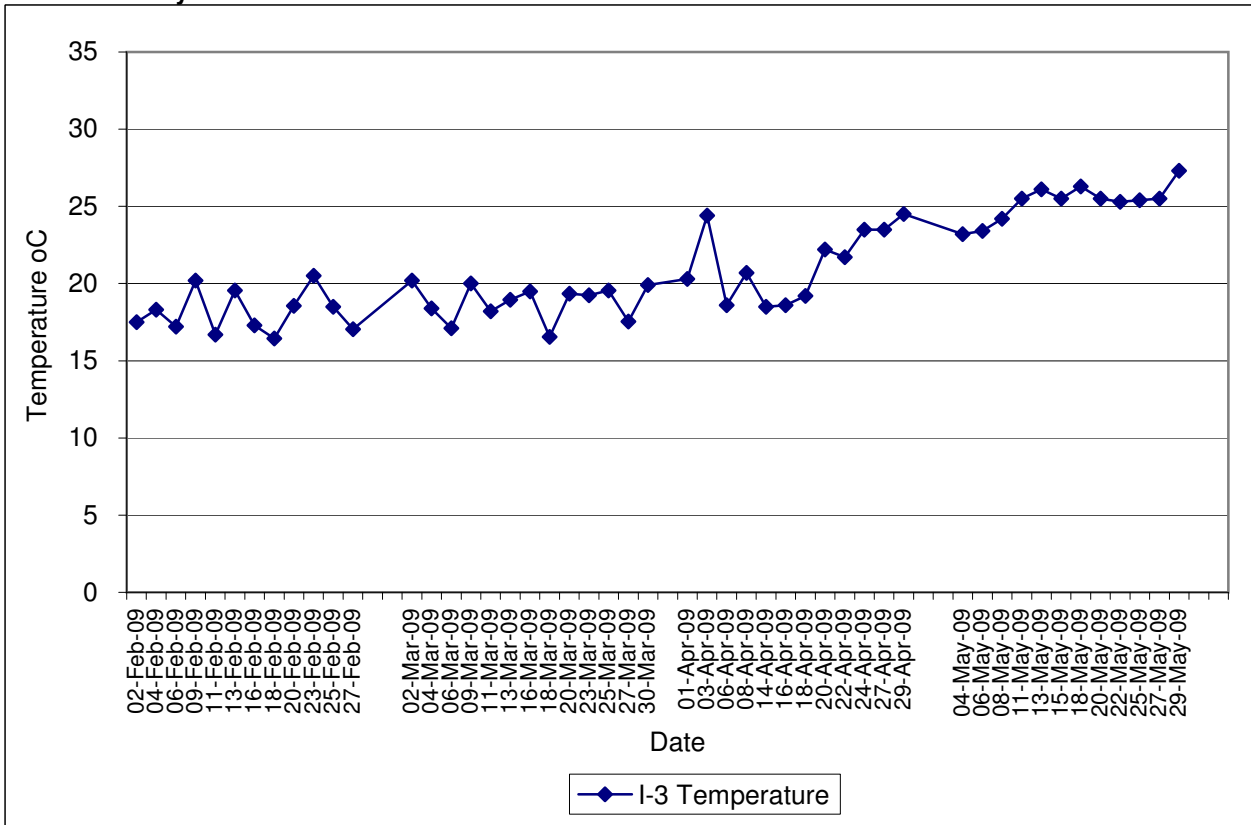
**Contract No. DC/2007/12 - Design and Construction of Tsuen Wan Drainage Tunnel
 Water Quality Results at Hong Hoi Chee Hong Temple (I-2)
 Feb-09 to May-09**



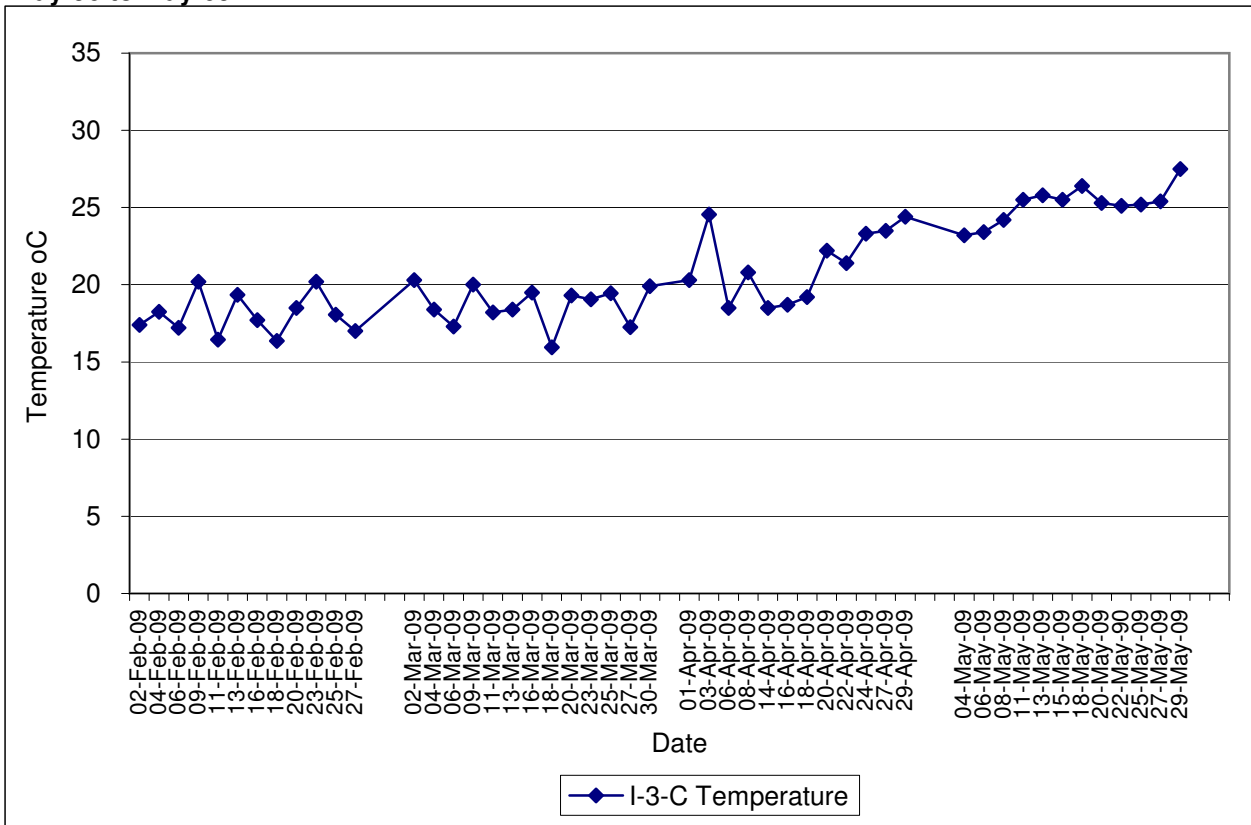
**Contract No. DC/2007/12 - Design and Construction of Tsuen Wan Drainage Tunnel
 Water Quality Results at Hong Hoi Chee Hong Temple (I-2-C)
 Feb-09 to May-09**



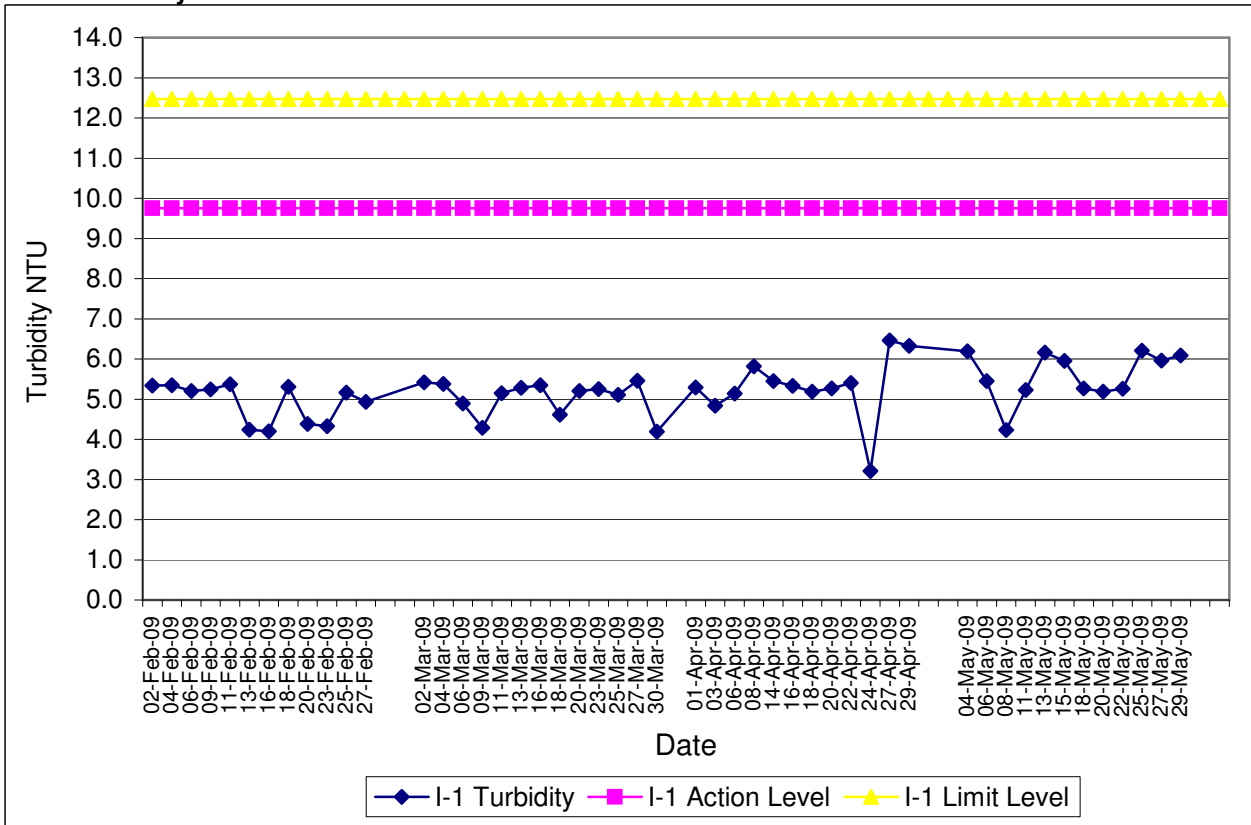
Contract No. DC/2007/12 - Design and Construction of Tsuen Wan Drainage Tunnel
Water Quality Results at Squatters (I-3)
Feb-09 to May-09



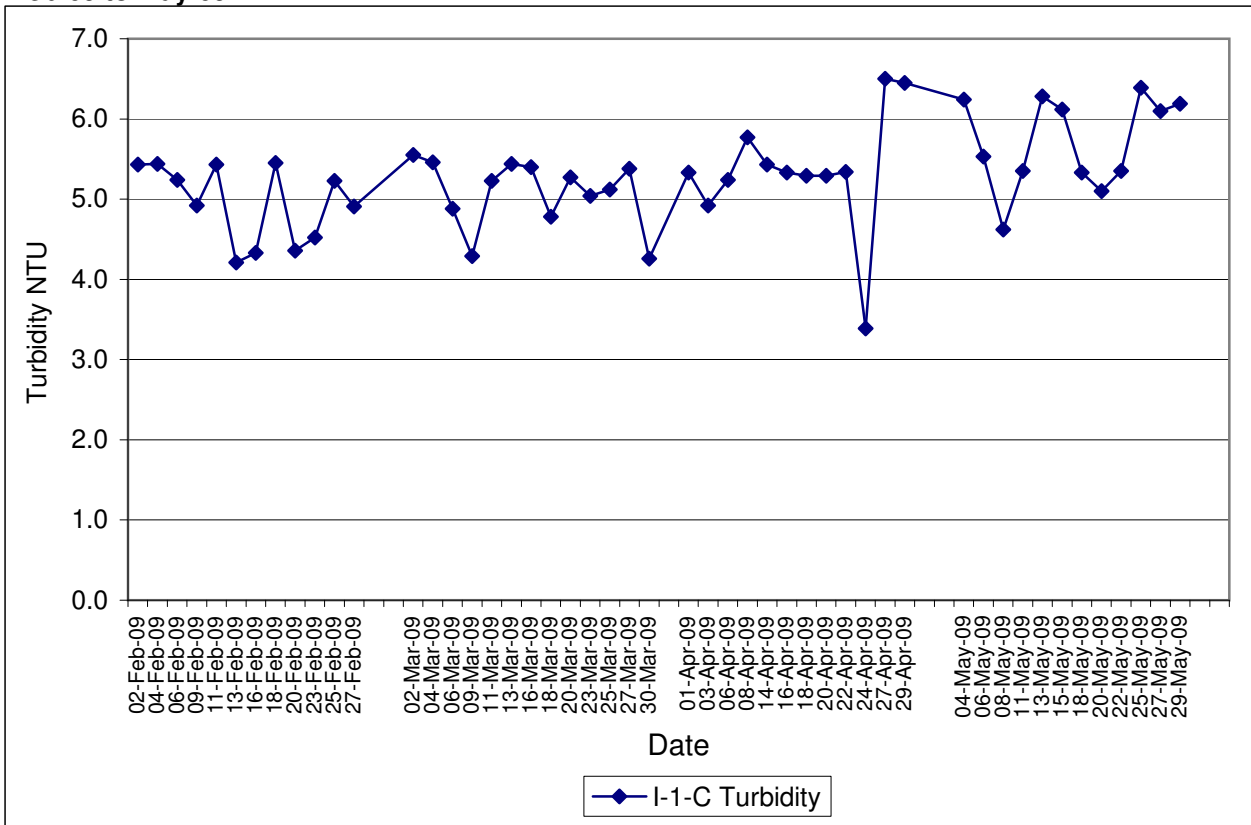
Contract No. DC/2007/12 - Design and Construction of Tsuen Wan Drainage Tunnel
Water Quality Results at Squatters (I-3-C)
May-09 to May-09



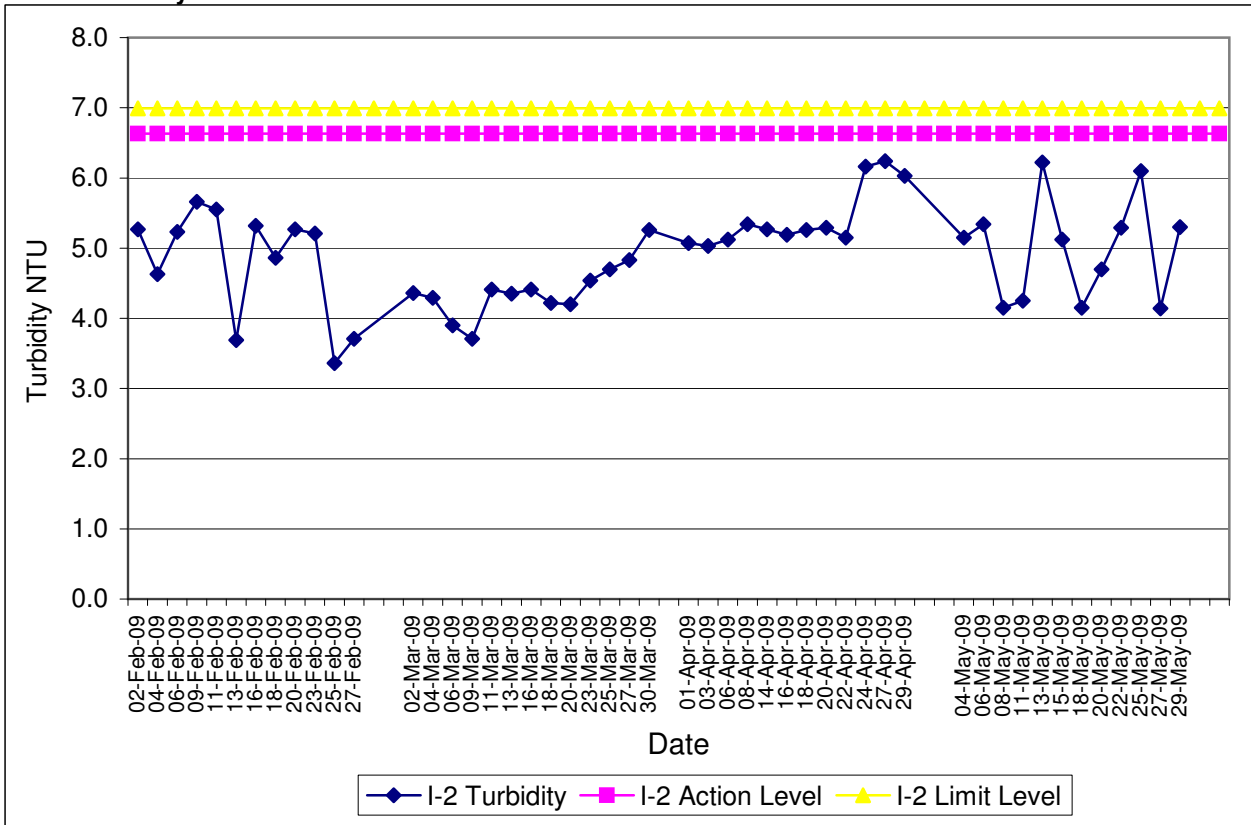
**Contract No. DC/2007/12 - Design and Construction of Tsuen Wan Drainage Tunnel
Water Quality Results at Sik Sik Yuen Ho Fung College (I-1)
Feb-09 to May-09**



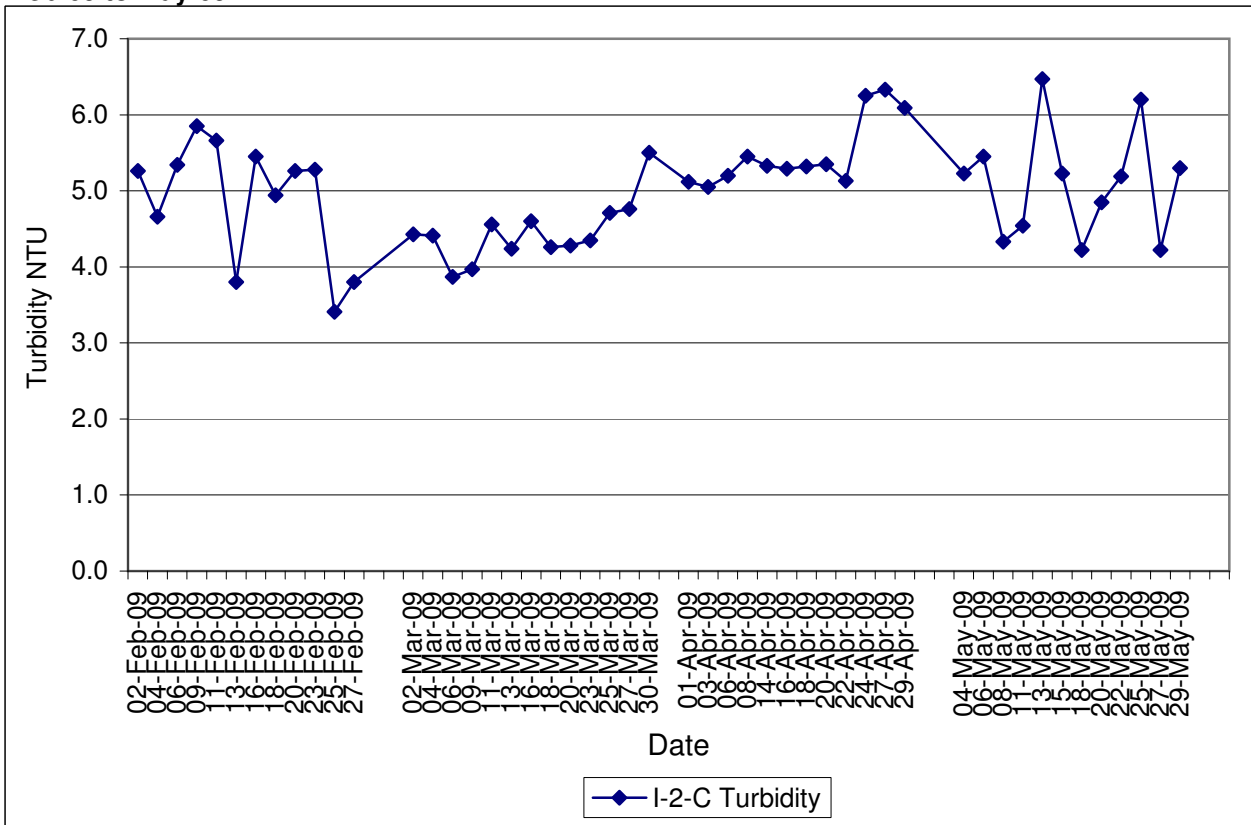
**Contract No. DC/2007/12 - Design and Construction of Tsuen Wan Drainage Tunnel
Water Quality Results at Sik Sik Yuen Ho Fung College (I-1-C)
Feb-09 to May-09**



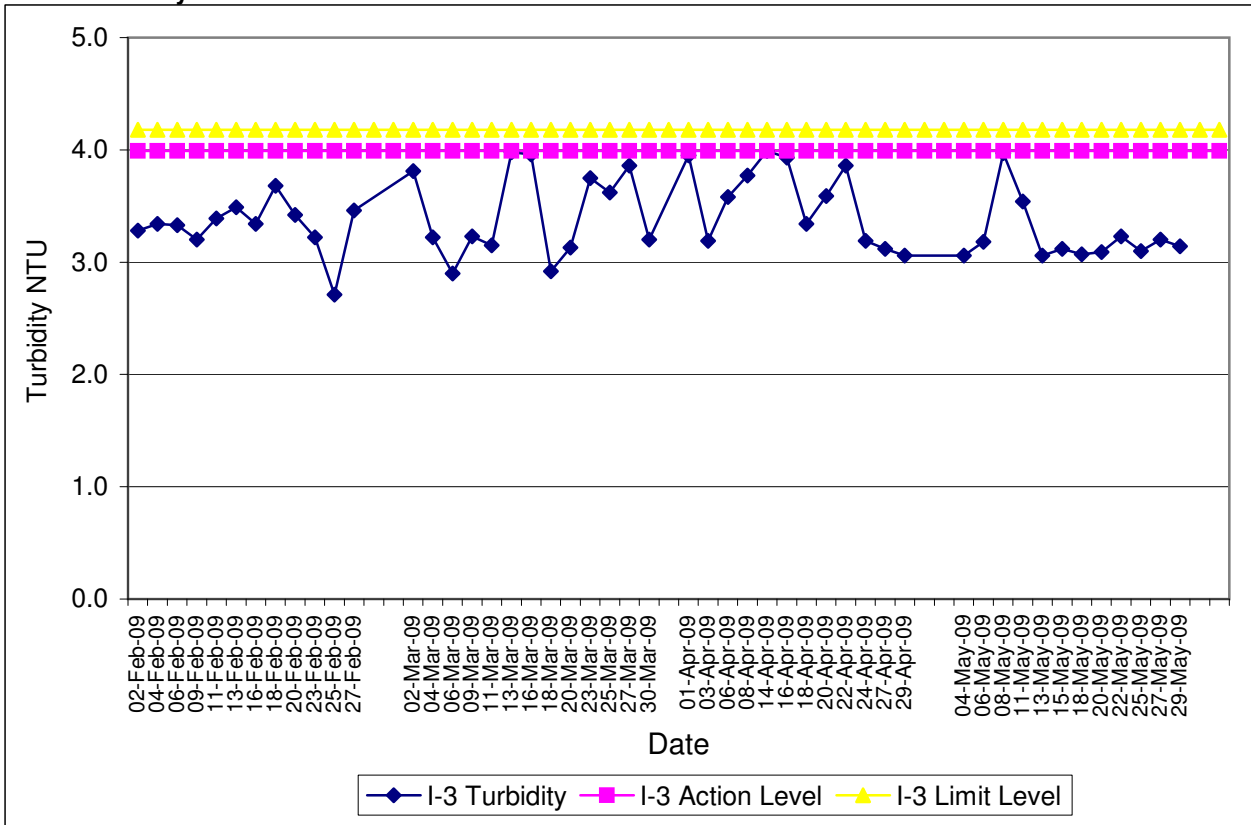
**Contract No. DC/2007/12 - Design and Construction of Tsuen Wan Drainage Tunnel
 Water Quality Results at Hong Hoi Chee Hong Temple (I-2)
 Feb-09 to May-09**



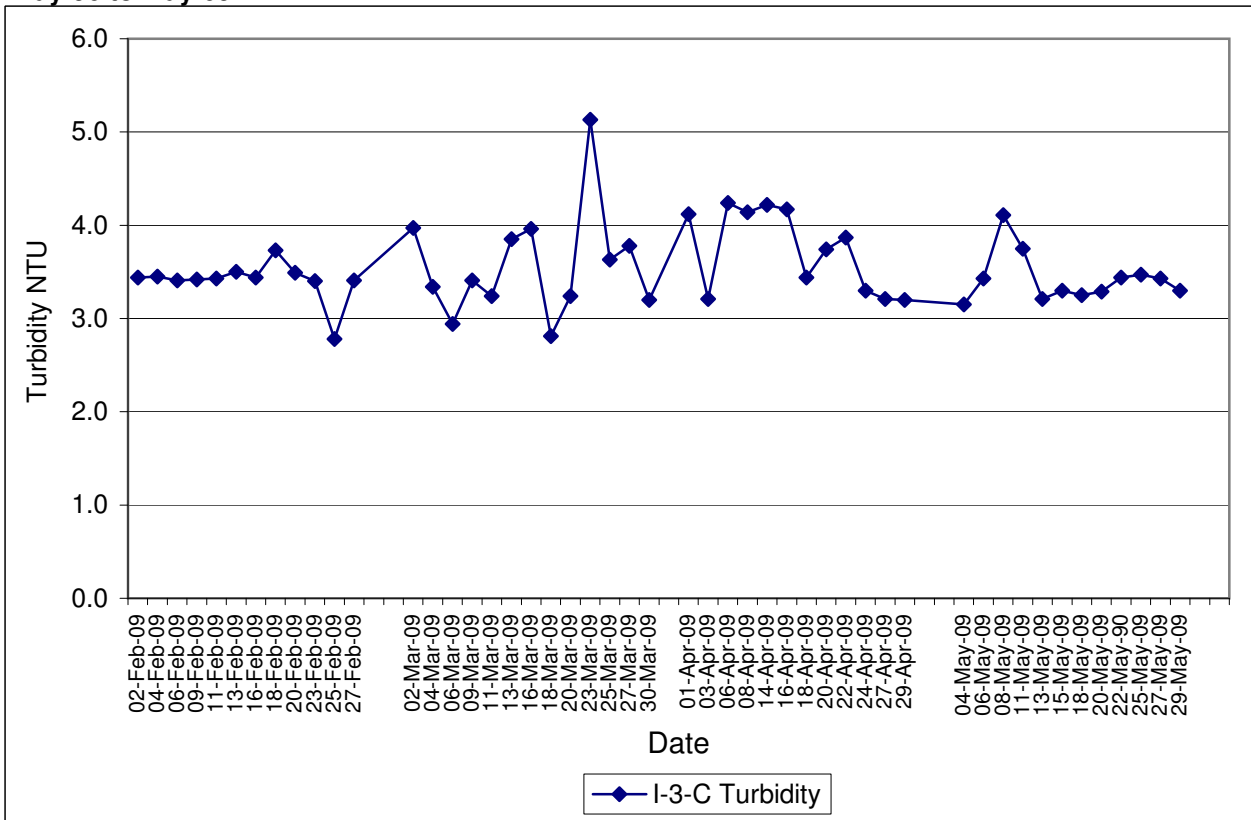
**Contract No. DC/2007/12 - Design and Construction of Tsuen Wan Drainage Tunnel
 Water Quality Results at Hong Hoi Chee Hong Temple (I-2-C)
 Feb-09 to May-09**



Contract No. DC/2007/12 - Design and Construction of Tsuen Wan Drainage Tunnel
Water Quality Results at Squatters (I-3)
Feb-09 to May-09

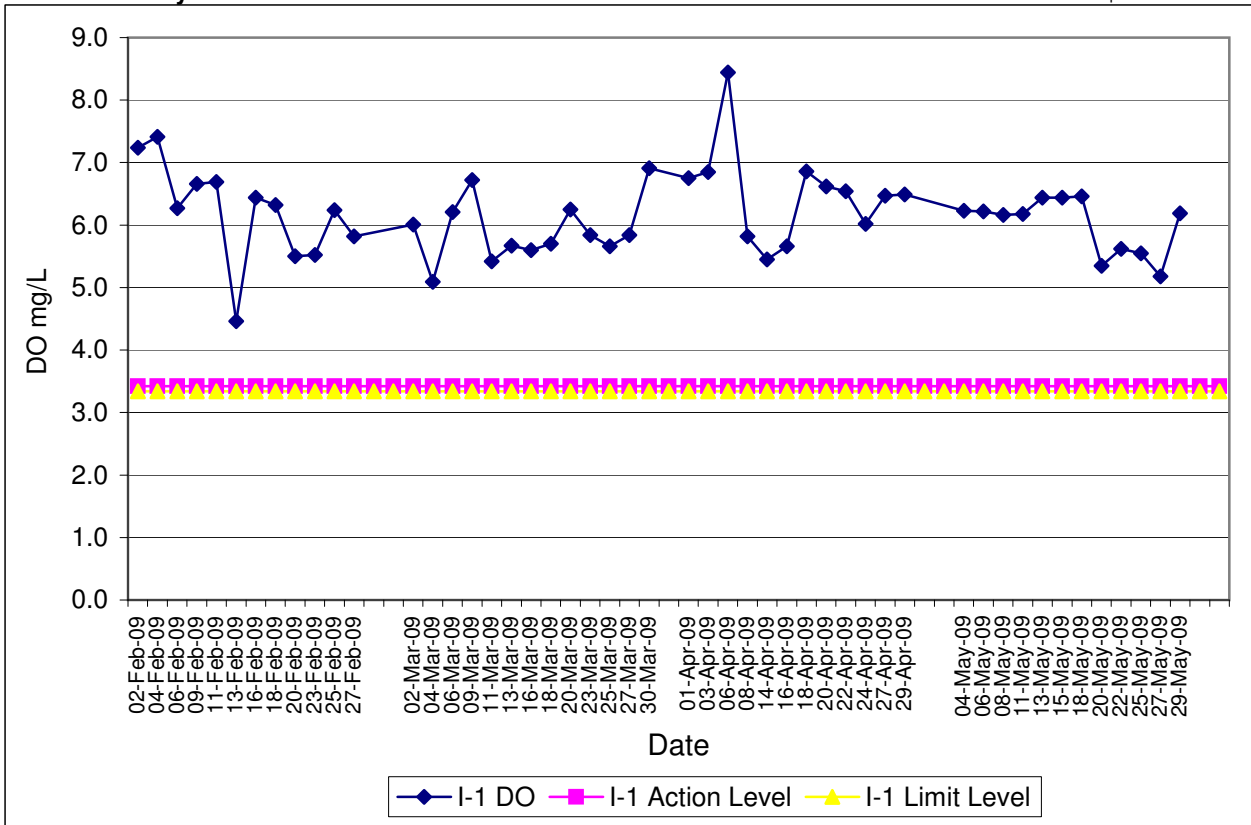


Contract No. DC/2007/12 - Design and Construction of Tsuen Wan Drainage Tunnel
Water Quality Results at Squatters (I-3-C)
May-09 to May-09

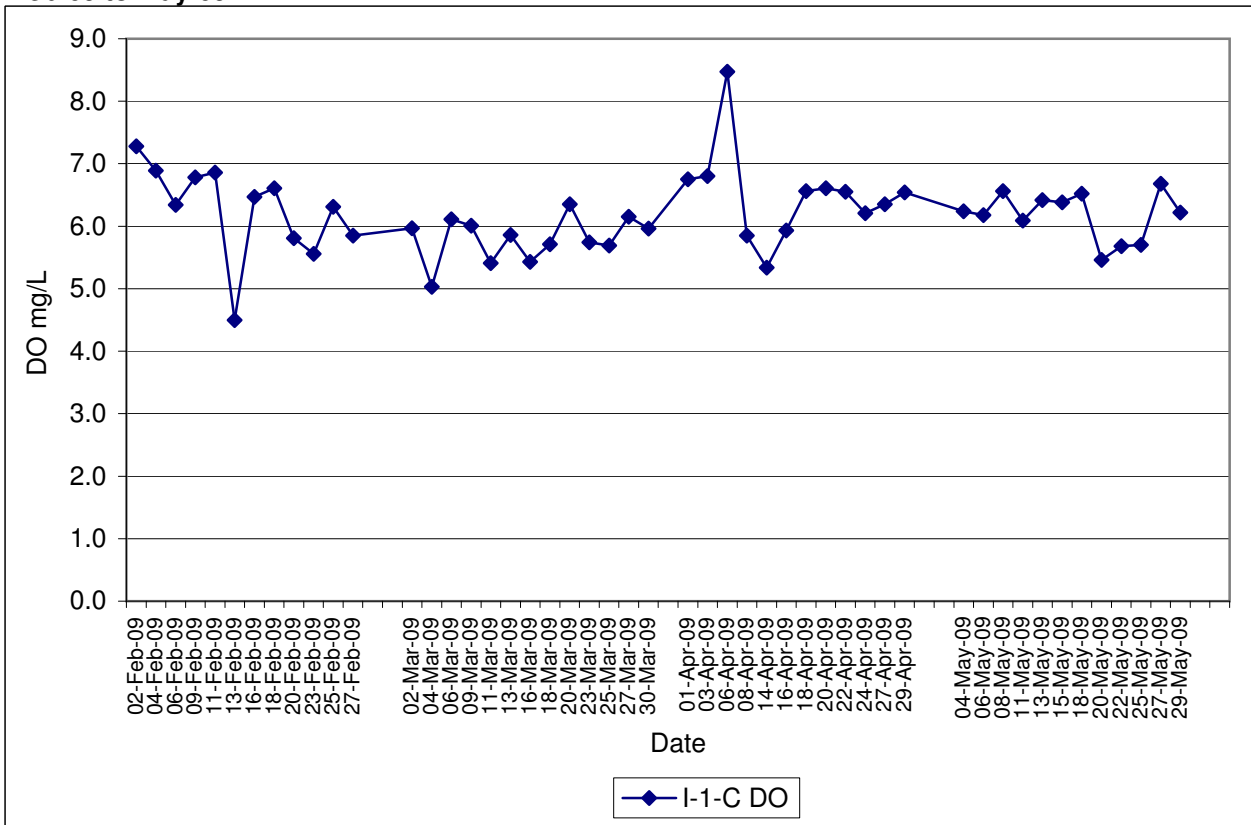


Contract No. DC/2007/12 - Design and Construction of Tsuen Wan Drainage Tunnel
Water Quality Results at Sik Sik Yuen Ho Fung College (I-1)
Feb-09 to May-09

Note: Exceedances of Action / Limit Levels occur when the levels of DO are below the respective limit levels.

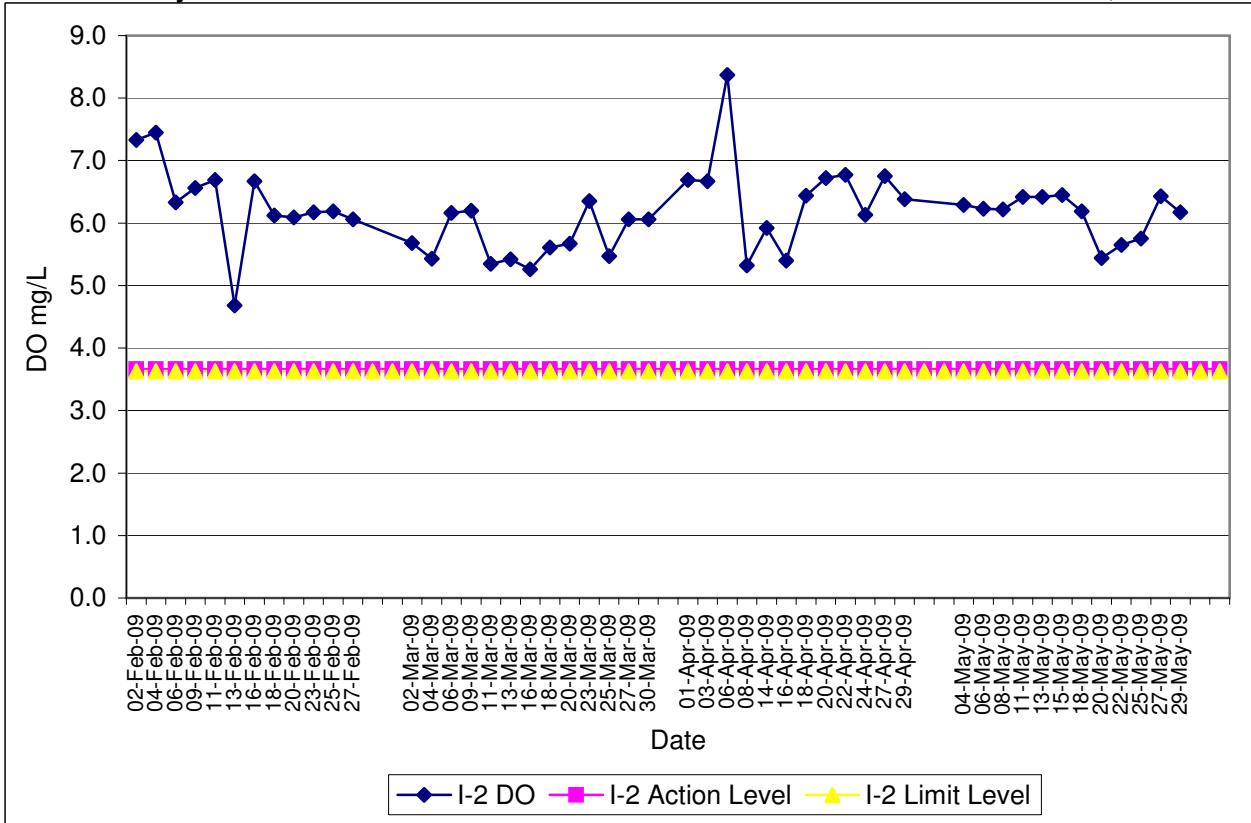


Contract No. DC/2007/12 - Design and Construction of Tsuen Wan Drainage Tunnel
Water Quality Results at Sik Sik Yuen Ho Fung College (I-1-C)
Feb-09 to May-09

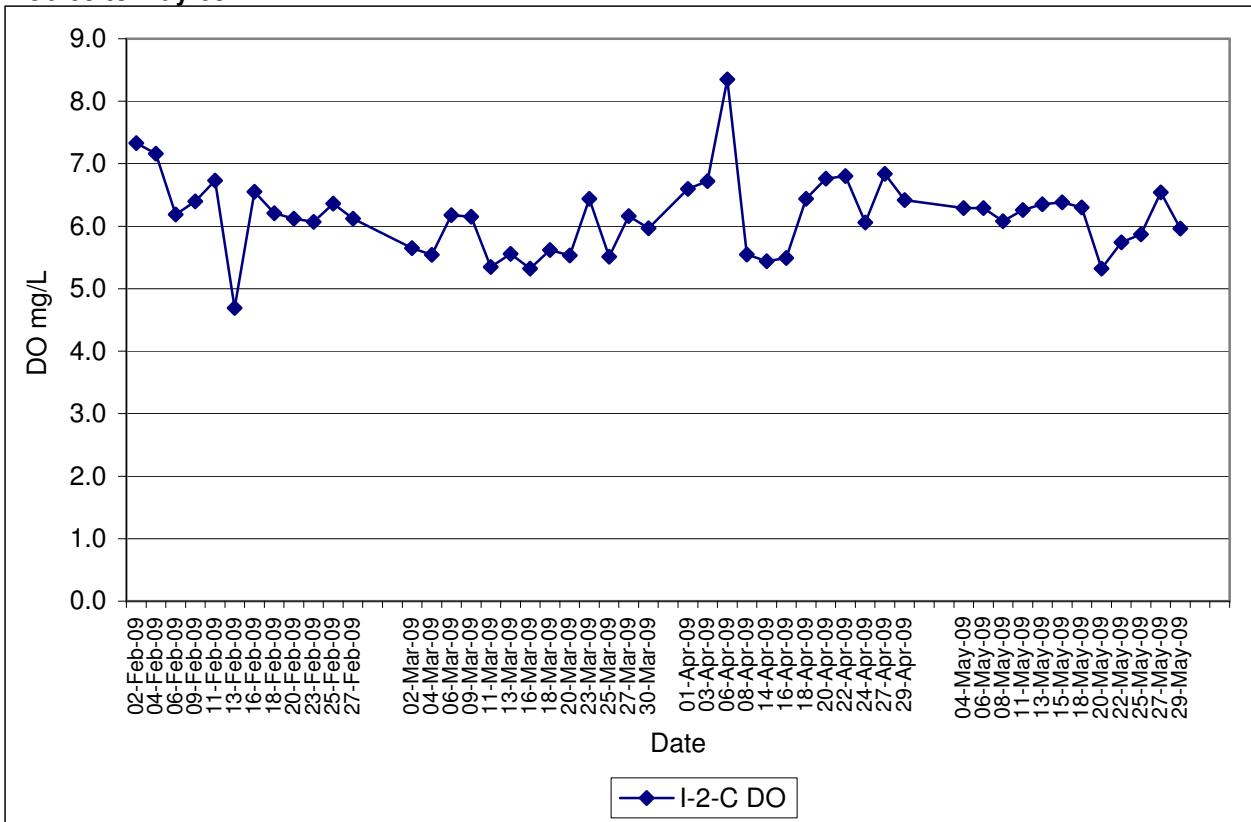


Contract No. DC/2007/12 - Design and Construction of Tsuen Wan Drainage Tunnel
Water Quality Results at Hong Hoi Chee Hong Temple (I-2)
Feb-09 to May-09

Note: Exceedances of Action / Limit Levels occur when the levels of DO are below the respective limit levels.

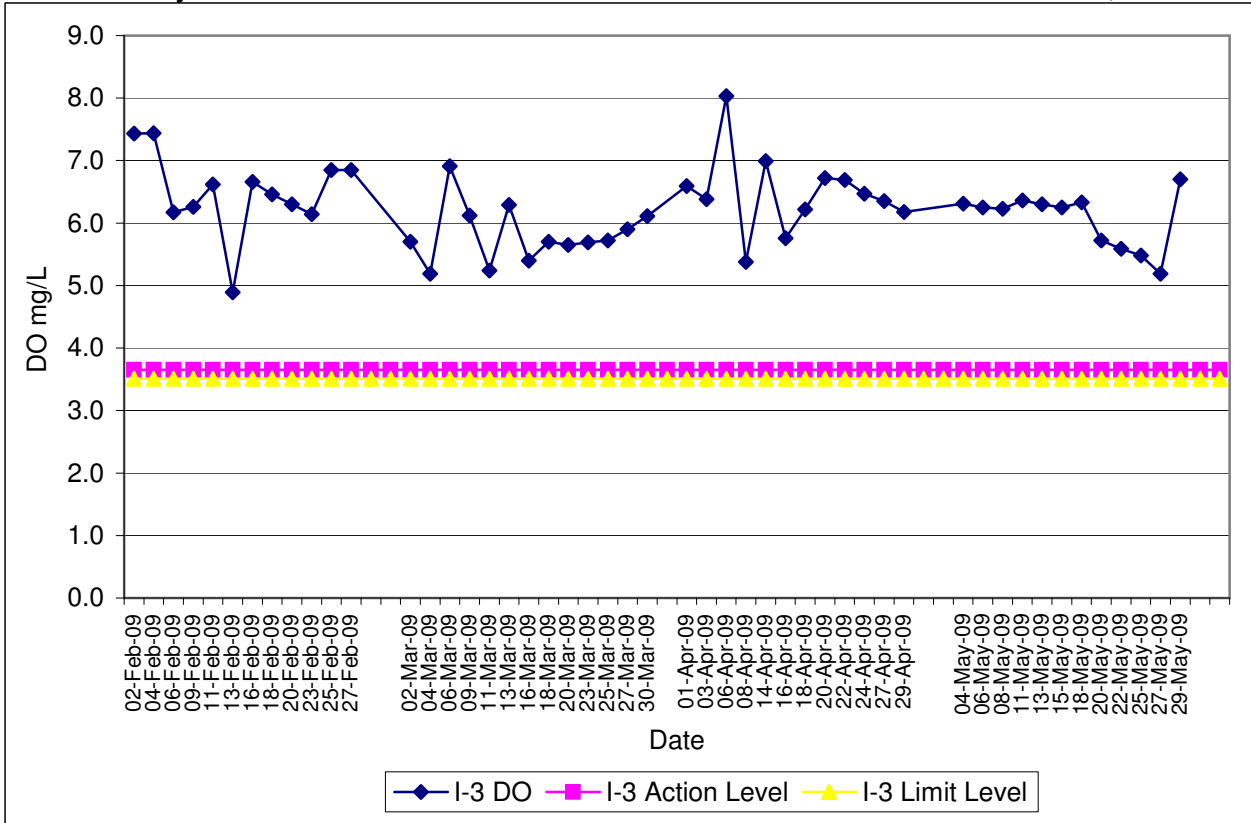


Contract No. DC/2007/12 - Design and Construction of Tsuen Wan Drainage Tunnel
Water Quality Results at Hong Hoi Chee Hong Temple (I-2-C)
Feb-09 to May-09

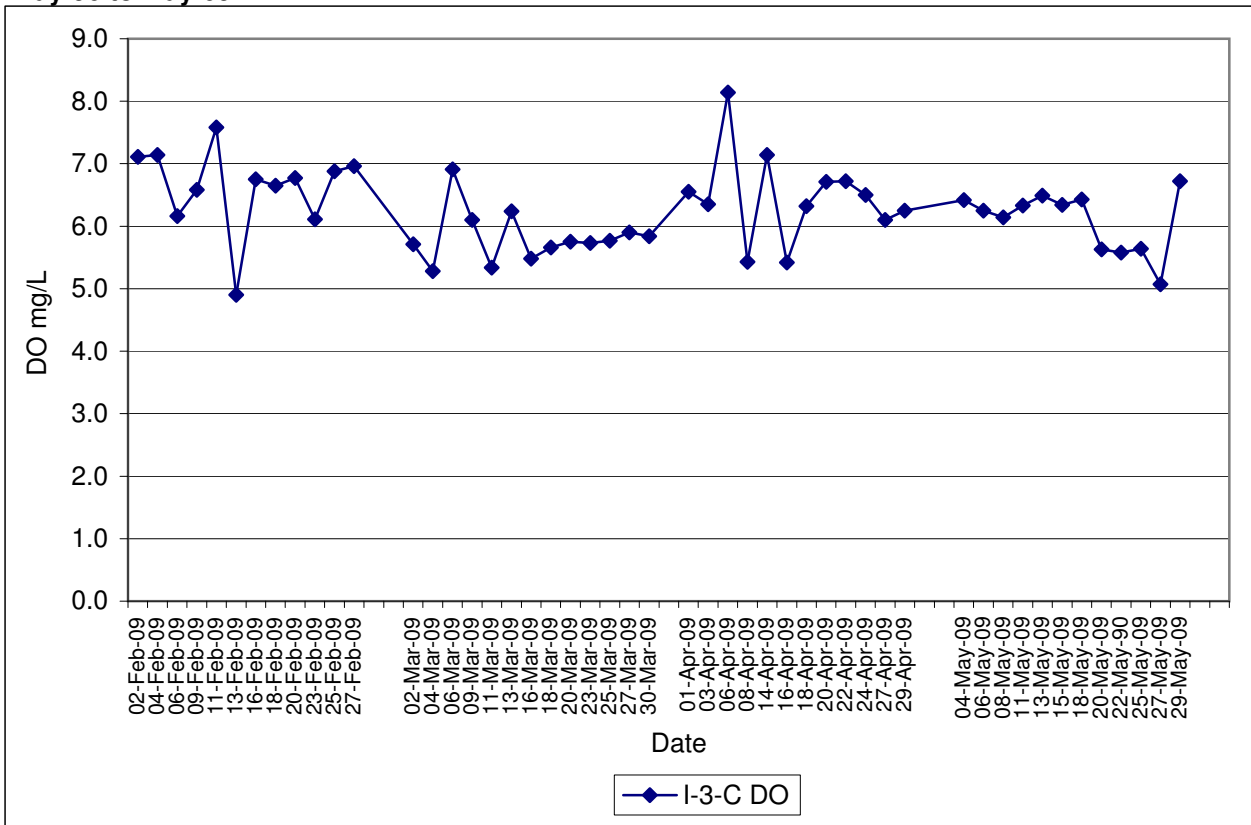


Contract No. DC/2007/12 - Design and Construction of Tsuen Wan Drainage Tunnel
Water Quality Results at Squatters (I-3)
Feb-09 to May-09

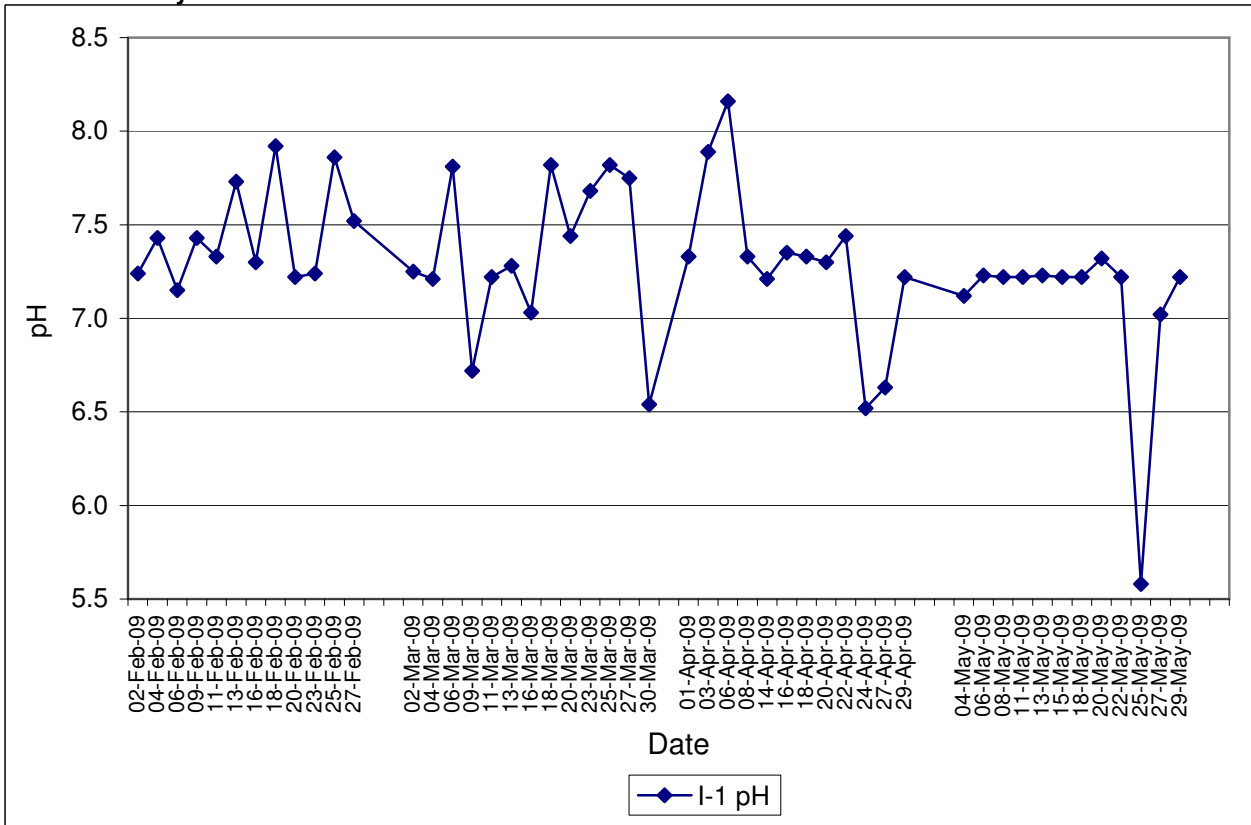
Note: Exceedances of Action / Limit Levels occur when the levels of DO are below the respective limit levels.



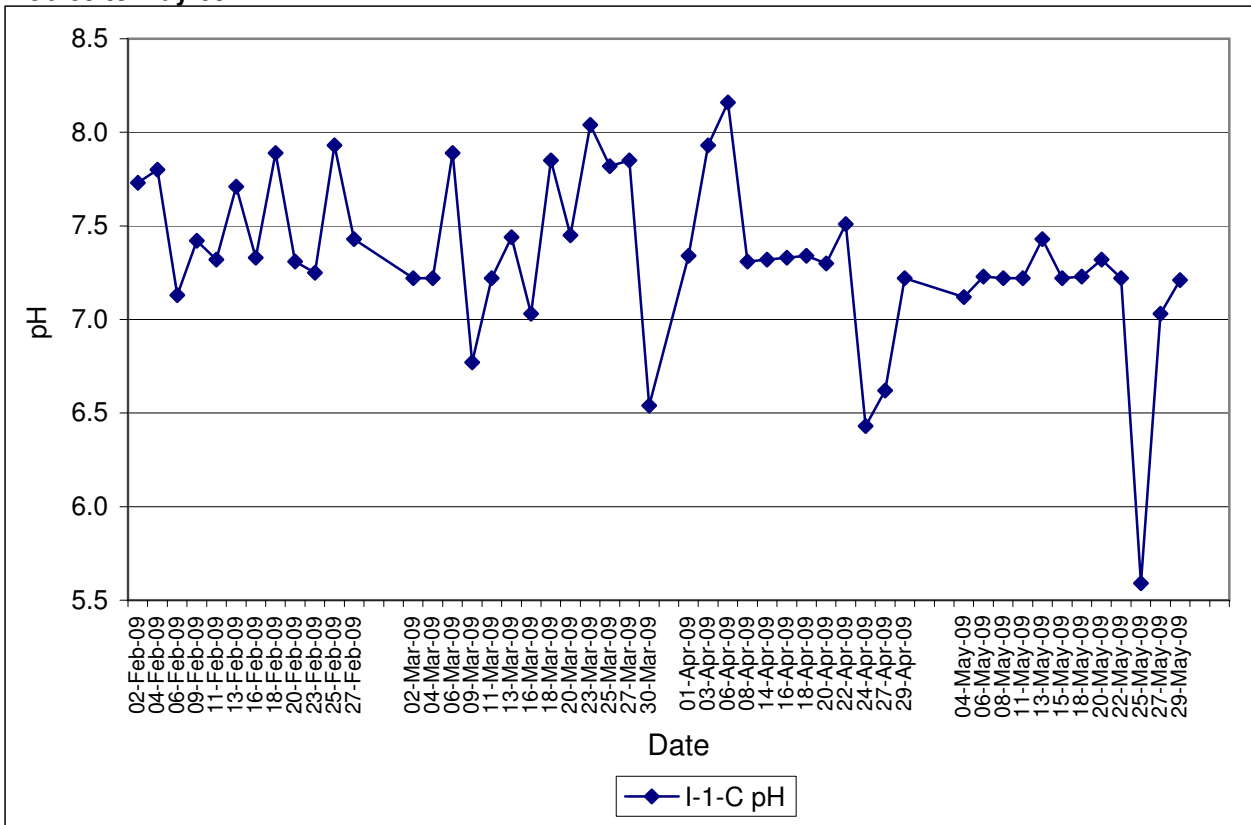
Contract No. DC/2007/12 - Design and Construction of Tsuen Wan Drainage Tunnel
Water Quality Results at Squatters (I-3-C)
May-90 to May-09



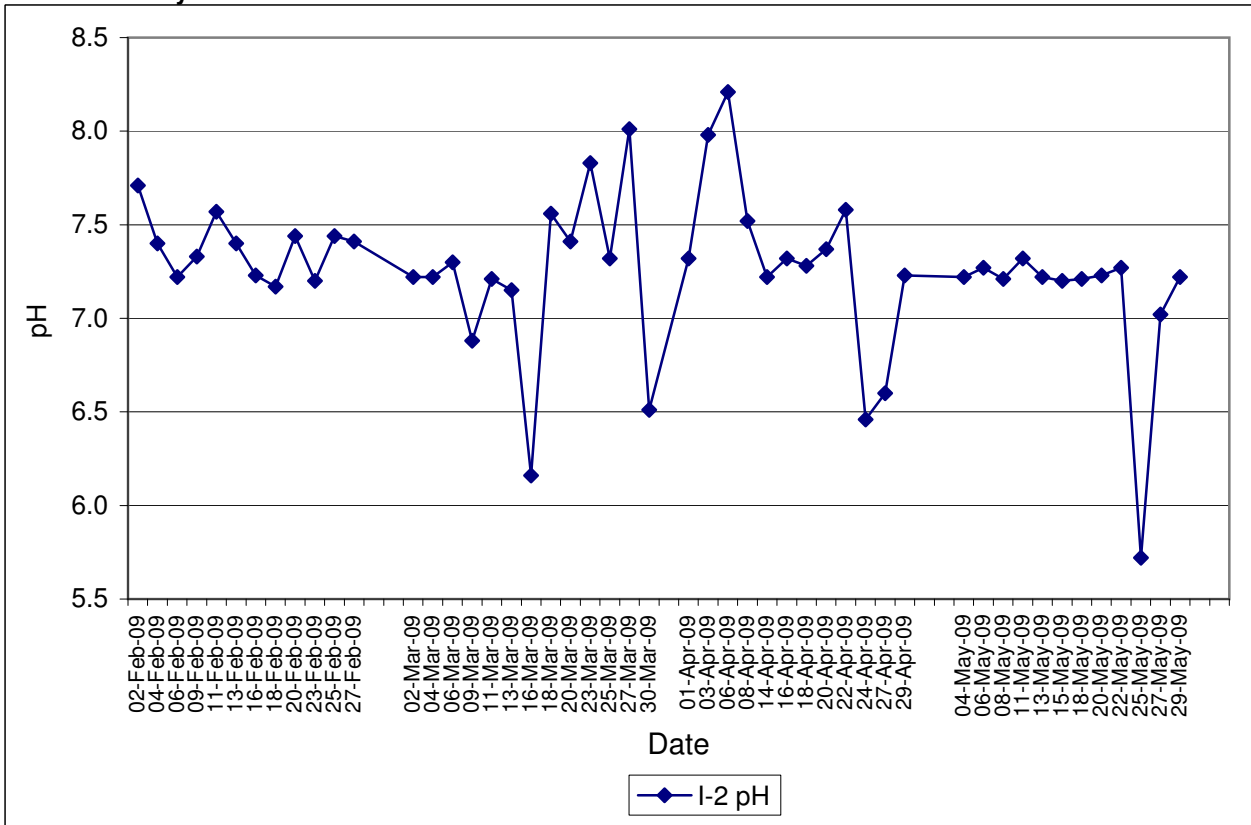
**Contract No. DC/2007/12 - Design and Construction of Tsuen Wan Drainage Tunnel
Water Quality Results at Sik Sik Yuen Ho Fung College (I-1)
Feb-09 to May-09**



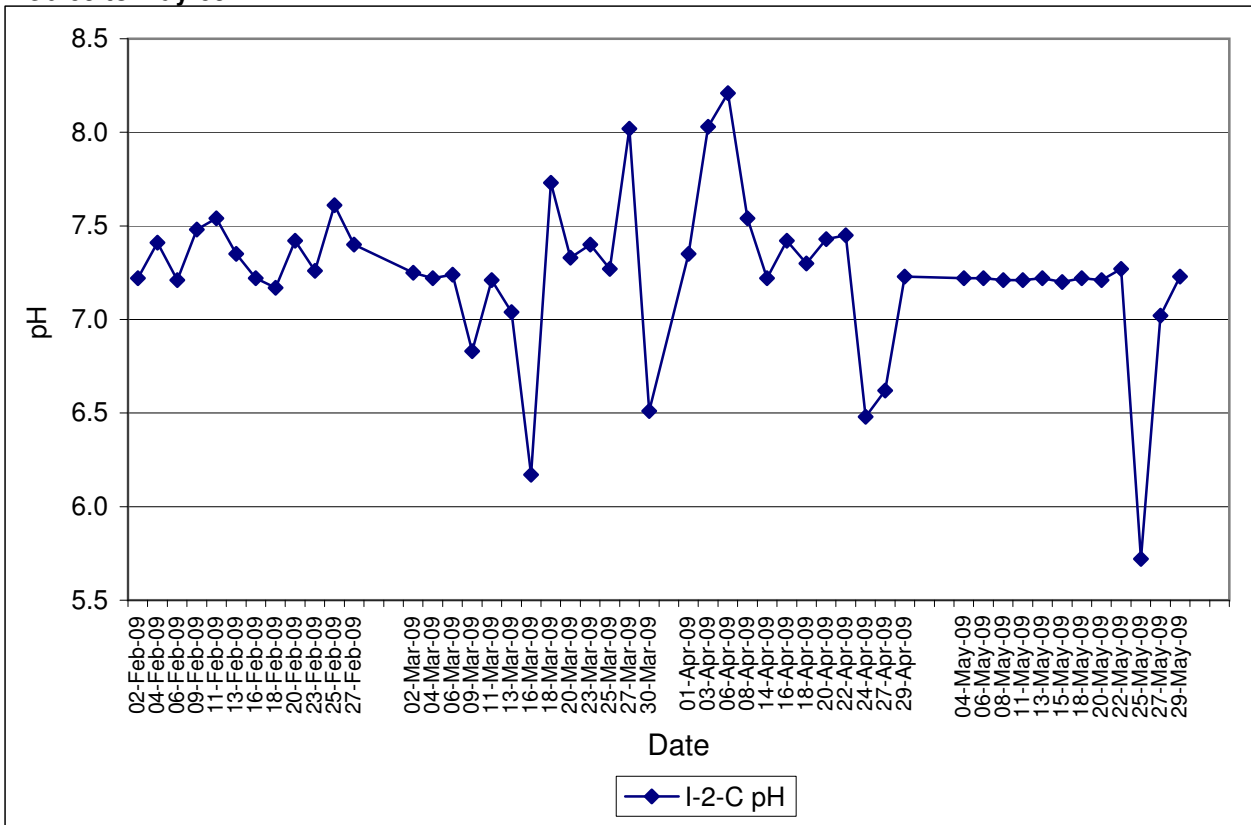
**Contract No. DC/2007/12 - Design and Construction of Tsuen Wan Drainage Tunnel
Water Quality Results at Sik Sik Yuen Ho Fung College (I-1-C)
Feb-09 to May-09**



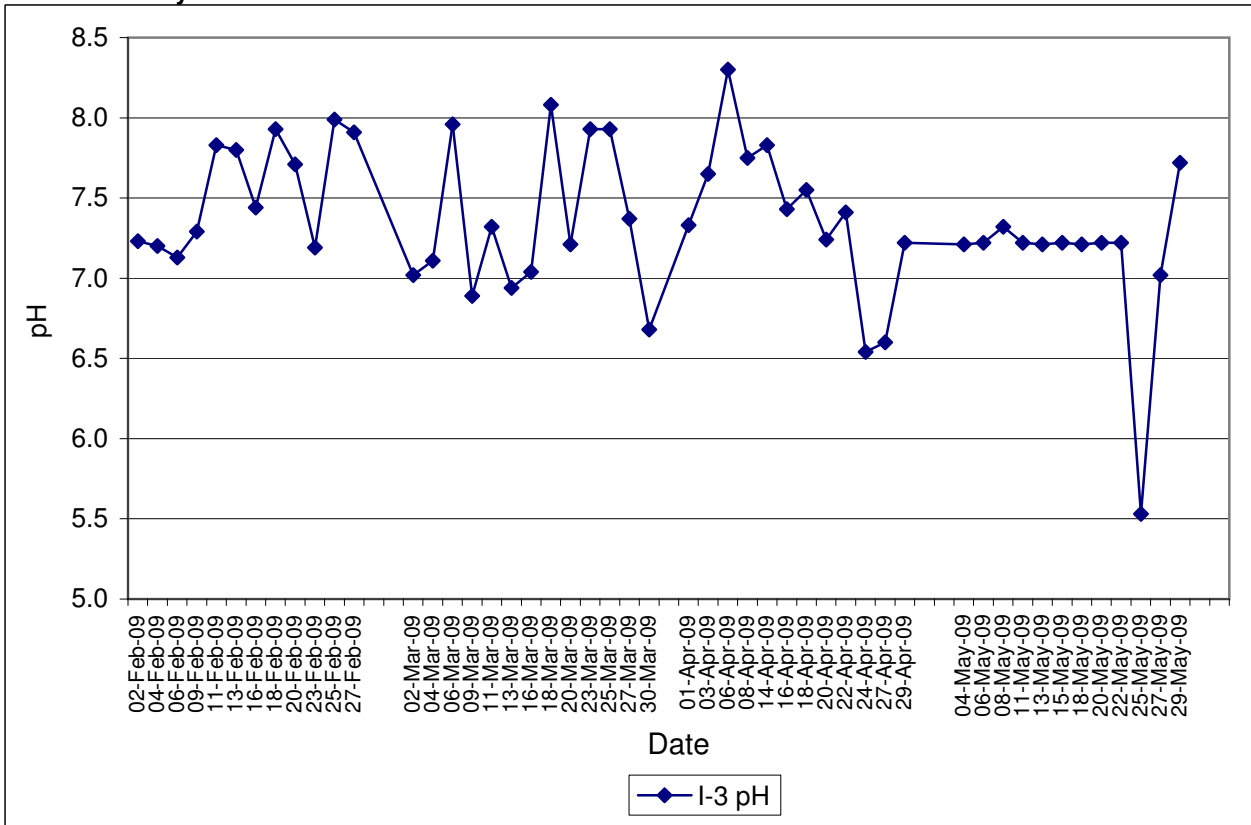
Contract No. DC/2007/12 - Design and Construction of Tsuen Wan Drainage Tunnel
Water Quality Results at Hong Hoi Chee Hong Temple (I-2)
Feb-09 to May-09



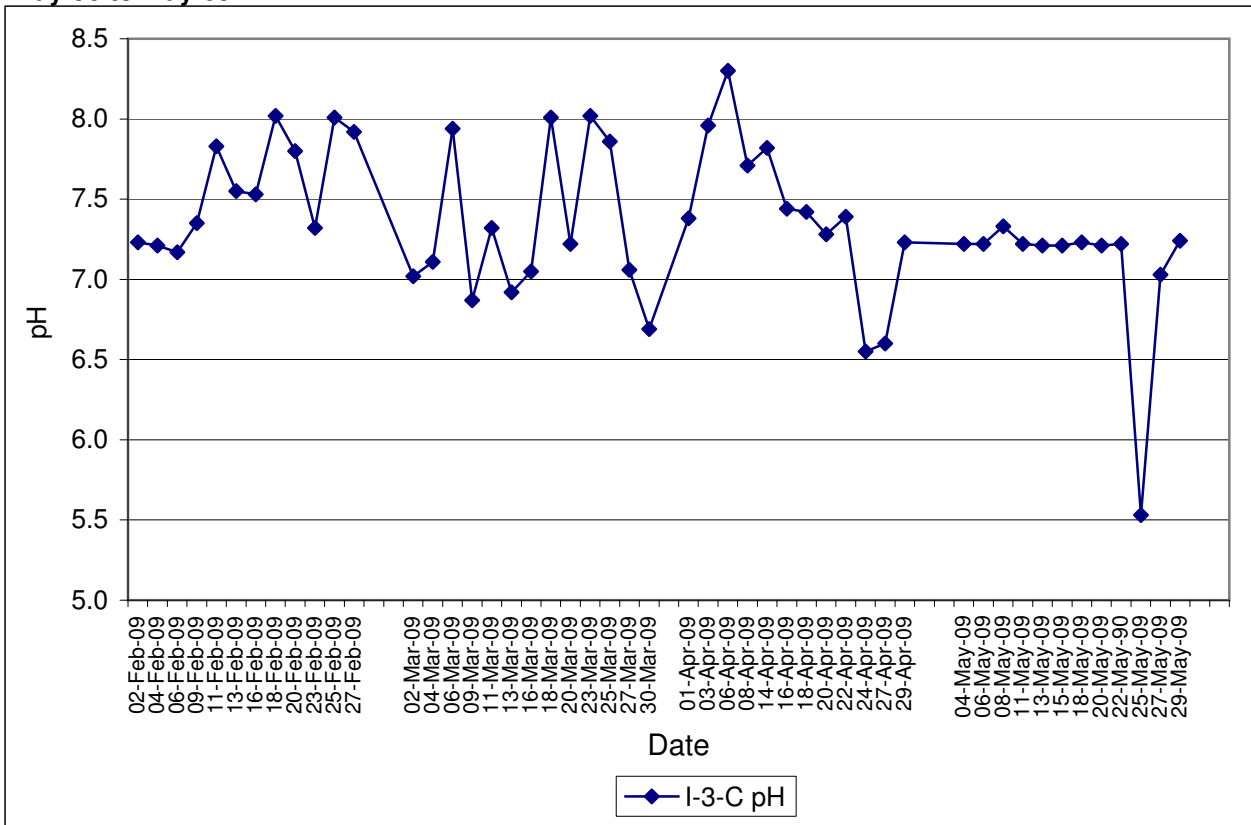
Contract No. DC/2007/12 - Design and Construction of Tsuen Wan Drainage Tunnel
Water Quality Results at Hong Hoi Chee Hong Temple (I-2-C)
Feb-09 to May-09



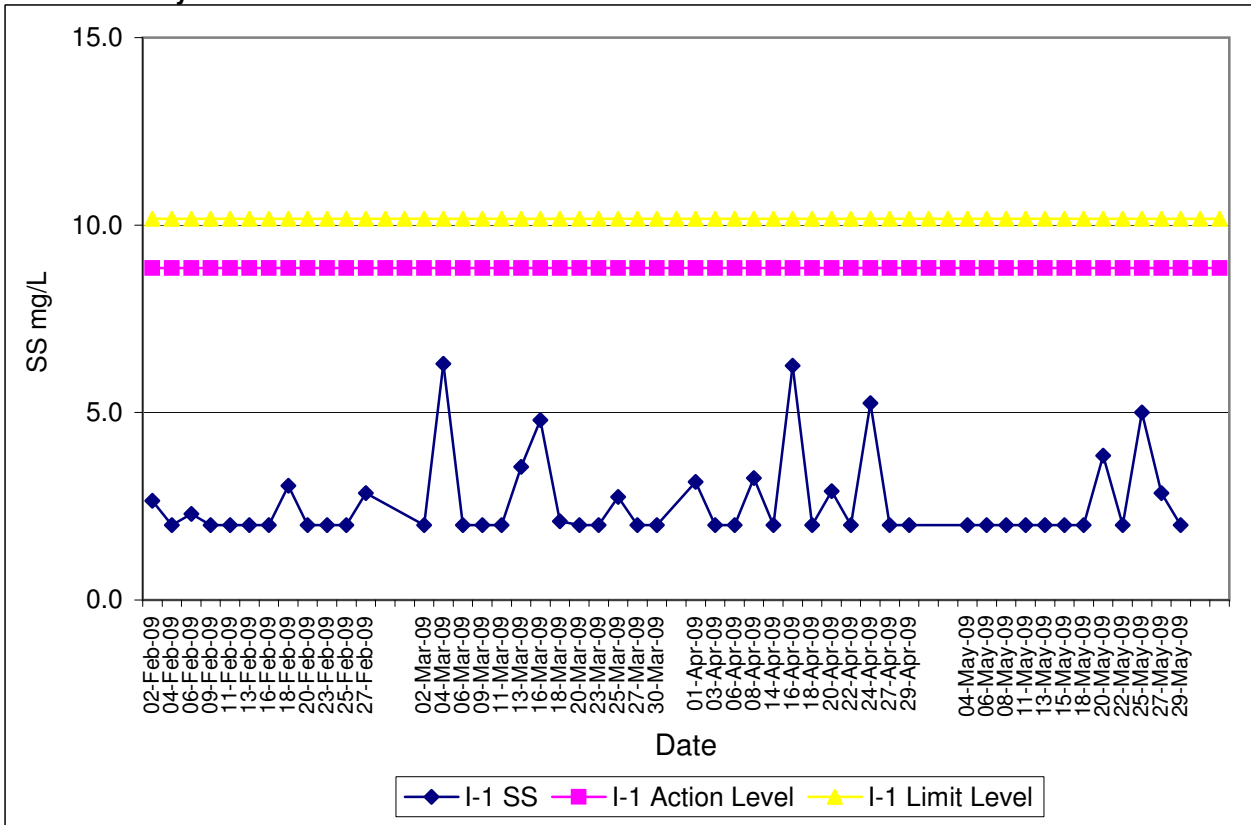
Contract No. DC/2007/12 - Design and Construction of Tsuen Wan Drainage Tunnel
Water Quality Results at Squatters (I-3)
Feb-09 to May-09



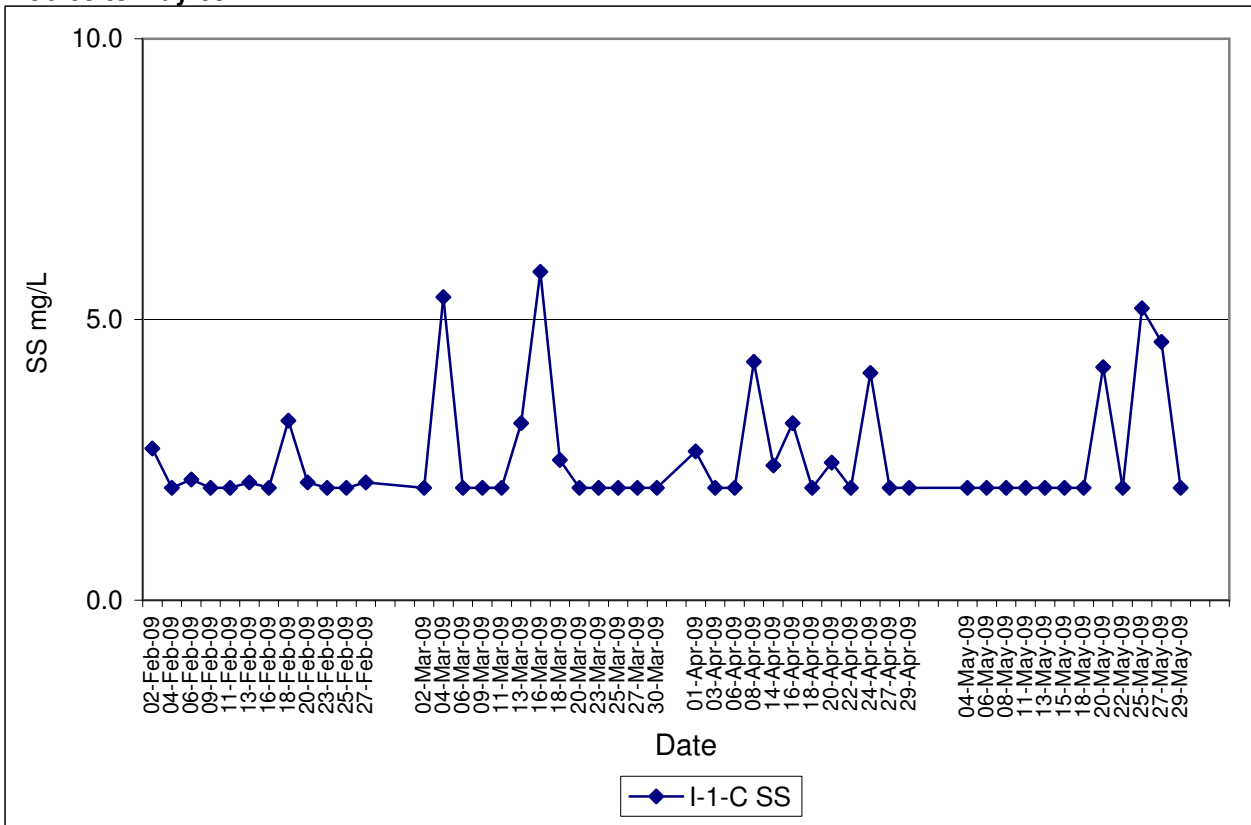
Contract No. DC/2007/12 - Design and Construction of Tsuen Wan Drainage Tunnel
Water Quality Results at Squatters (I-3-C)
May-09 to May-09



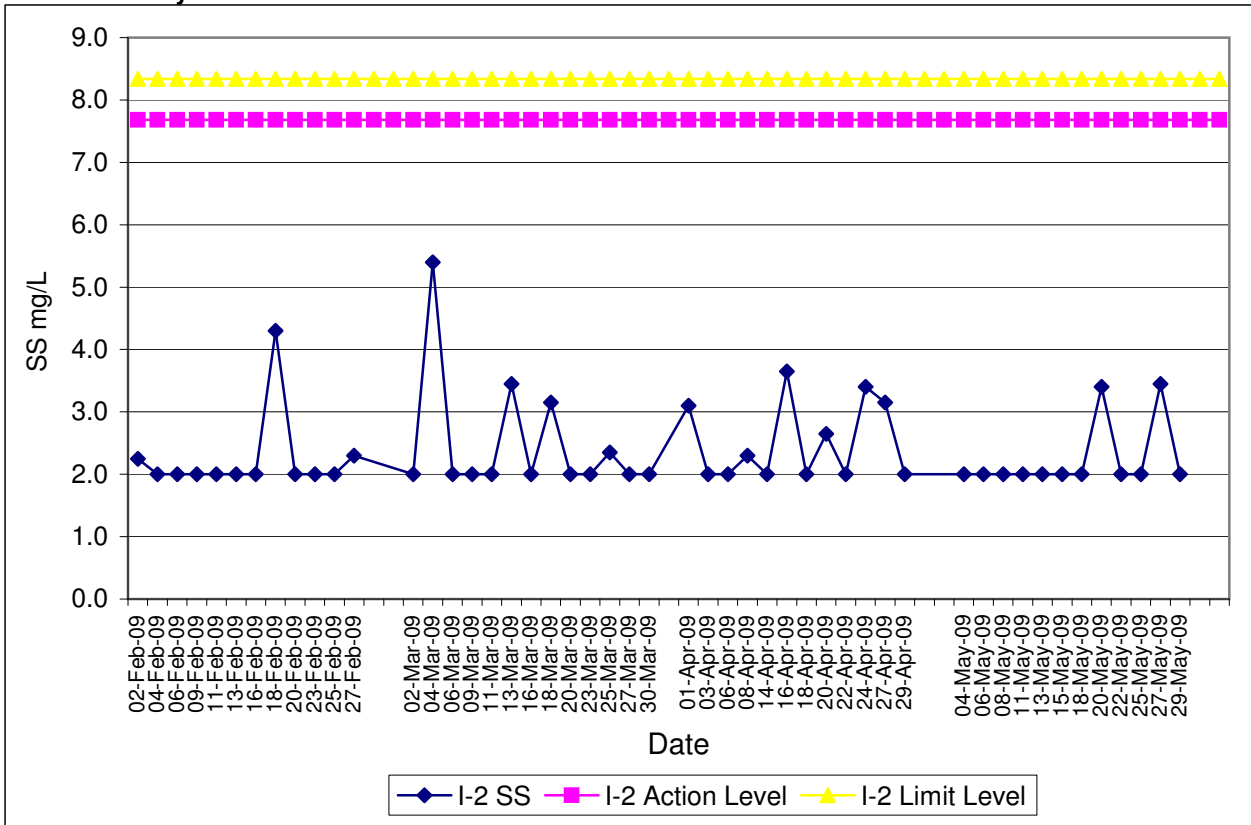
**Contract No. DC/2007/12 - Design and Construction of Tsuen Wan Drainage Tunnel
 Water Quality Results at Sik Sik Yuen Ho Fung College (I-1)
 Feb-09 to May-09**



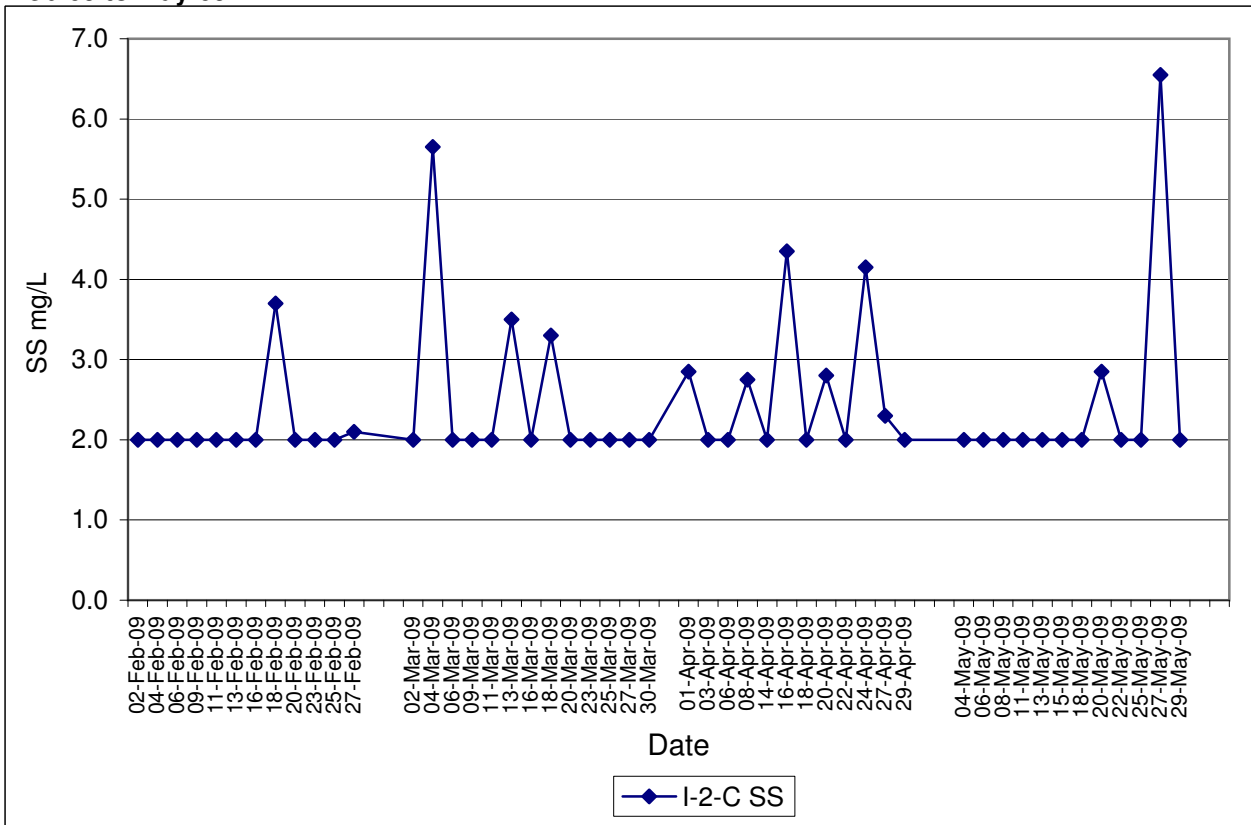
**Contract No. DC/2007/12 - Design and Construction of Tsuen Wan Drainage Tunnel
 Water Quality Results at Sik Sik Yuen Ho Fung College (I-1-C)
 Feb-09 to May-09**



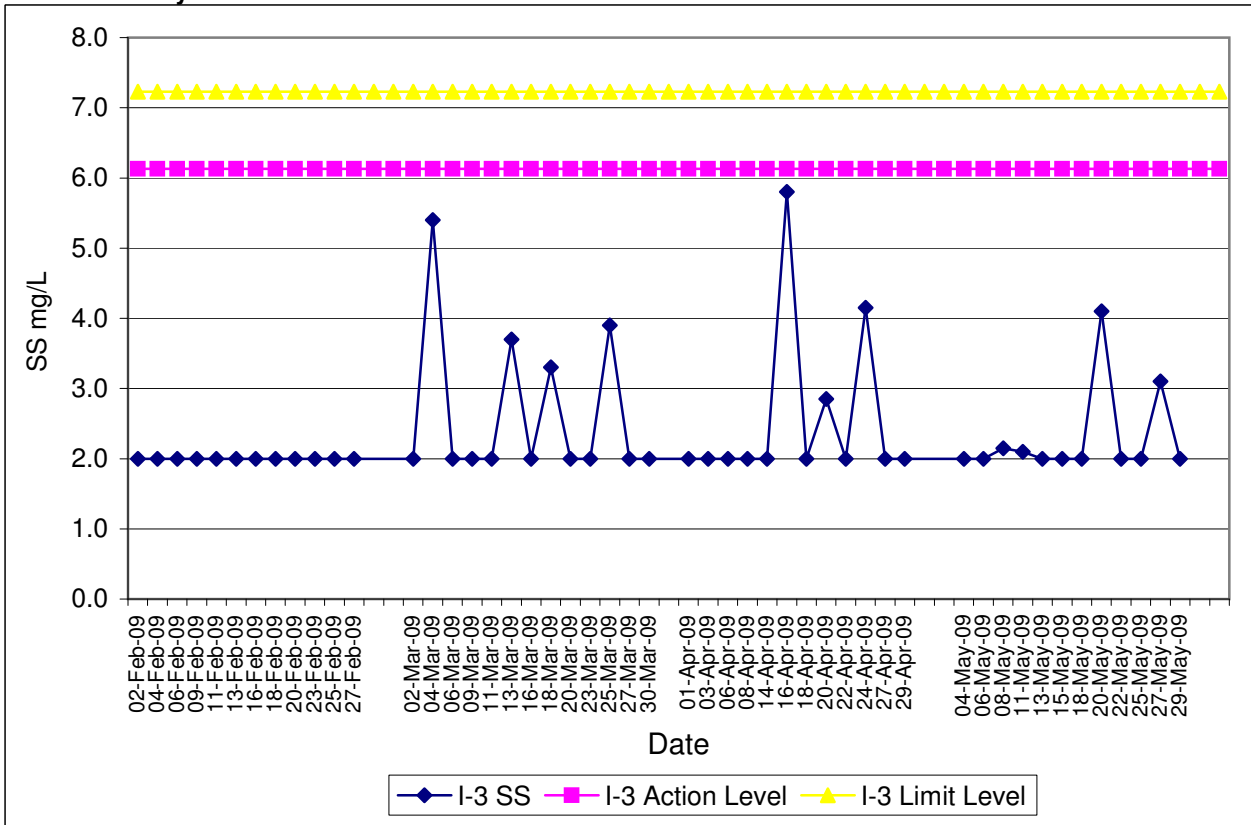
Contract No. DC/2007/12 - Design and Construction of Tsuen Wan Drainage Tunnel
Water Quality Results at Hong Hoi Chee Hong Temple (I-2)
Feb-09 to May-09



Contract No. DC/2007/12 - Design and Construction of Tsuen Wan Drainage Tunnel
Water Quality Results at Hong Hoi Chee Hong Temple (I-2-C)
Feb-09 to May-09



Contract No. DC/2007/12 - Design and Construction of Tsuen Wan Drainage Tunnel
Water Quality Results at Squatters (I-3)
Feb-09 to May-09



Contract No. DC/2007/12 - Design and Construction of Tsuen Wan Drainage Tunnel
Water Quality Results at Squatters (I-3-C)
May-09 to May-09

